



NORMATIVE DI RIFERIMENTO:

UNI 4600 Indicazione delle rugosità sui disegni

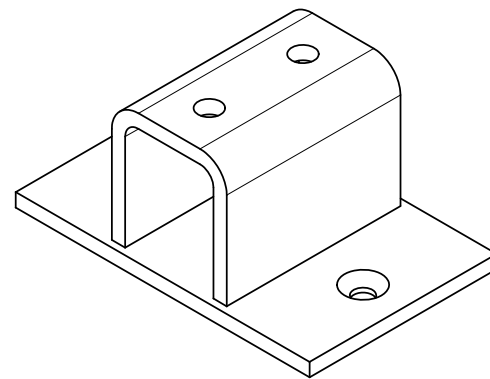
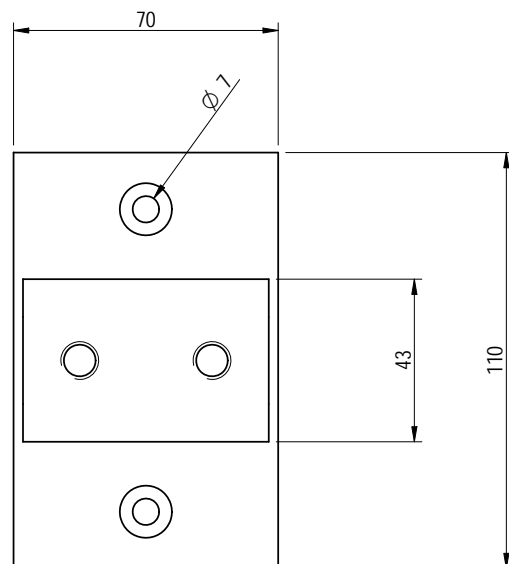
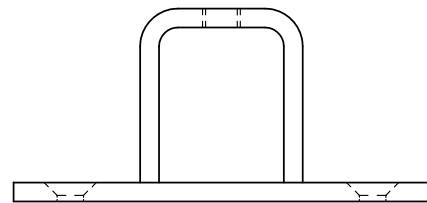
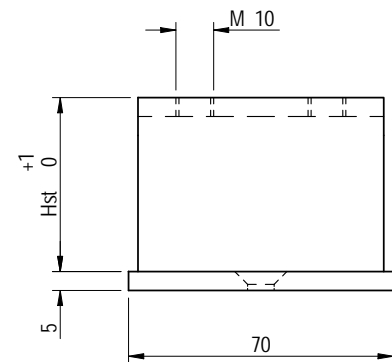
UNI 7070 Acciai non legati per impieghi strutturali

UNI EN 22553 Rappresentazione simbolica delle saldature sui disegni

UNI EN 10025 Acciai non legati laminati a caldo

| | | | |
|--------------------------------------------------------------------------------------------------------------------------------------------------------------------------------------------------------------|------------|---------------------------------------------------------------------------------------------------------------|------------------------------|
| | | | |
| | | | |
| <i>DATE</i> | <i>No.</i> | <i>REVISION</i> | <i>BY</i> |
|  MECH srl Via Pasteur, 16 - Reggio Emilia Tel. 0522/332903 - FAX 0522/1710466 E-mail: info@strutture.info | |  Scale : See views | |
| Total: KIT STANDARD PER INTEGRAZIONE FOTOVOLTAICA | | | Date: |
| Title: PARTICOLARE DI MONTAGGIO CON STAFFA TIPO 1 | | | Proj. : Menozzi Ing. Stefano |
| Details n°: | | | Desig.: SNA |
| File's name: | | | Drawing n° = vedi Titolo |
| | | | Revision n° 0 |

| Codice | Descrizione | Disegno | Materiale | L1 (mm) | S (mm) | L2 (mm) | Hst (mm) | B (mm) | Passo max (mm) | Sbalzo max (mm) | Peso |
|--------|------------------------------------------------------|---------------|-----------|---------|--------|---------|----------|--------|----------------|-----------------|---------|
| | STAFFA TIPO 1 x OMEGA L70x110x H46 xsp5 mat. AISI304 | STAFFA TIPO 1 | AISI304 | 70 | 5 | 110 | 46 | | | | 0.61 kg |
| | STAFFA TIPO 1 x OMEGA L70x110x H41 xsp5 mat. AISI304 | | AISI304 | 70 | 5 | 110 | 41 | | | | kg |
| | STAFFA TIPO 1 x OMEGA L70x110x H38 xsp5 mat. AISI304 | | AISI304 | 70 | 5 | 110 | 38 | | | | kg/m |



SOLO PER OMEGA SERIE 50

| | | | |
|--|--|--|--|
| | | | |
| | | | |
| | | | |
| | | | |
| | | | |

| DATE | No. | REVISION | BY |
|------|-----|----------|----|
| | | | |

Connections
 Nuts and Bolts : 8.8 class galv. "DACROMET"
 Welds : MAG or basic electrode as UNI 10011

typical filled welds

single weld
 double weld

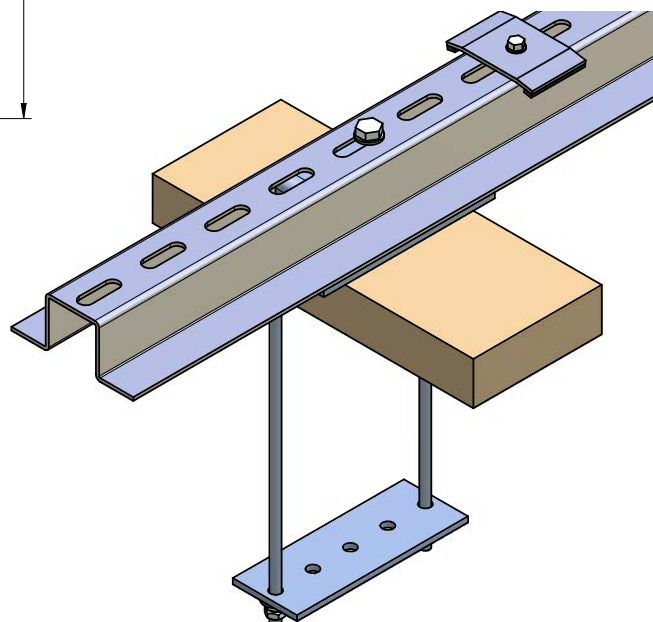
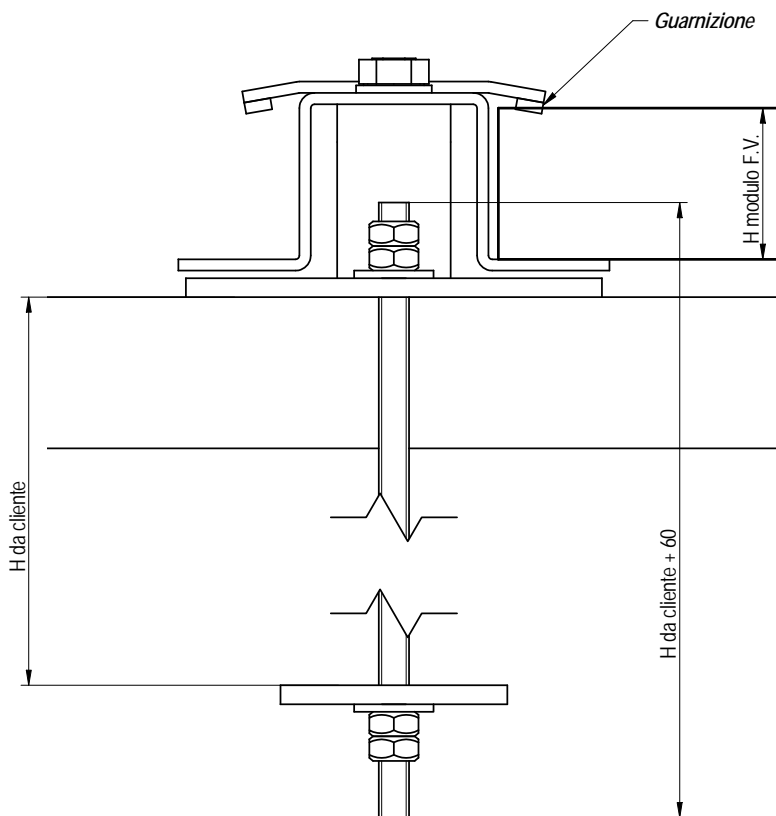
Thickness of the welds have to be equal to the minimum thickness of the pieces to be join where is not indicated differently.

NORMATIVE DI RIFERIMENTO:
 UNI 4600 Indicazione delle rugosità sui disegni
 UNI7070 Acciai non legati per impieghi strutturali
 UNI EN 22553 Rappresentazione simbolica delle saldature sui disegni
 UNI EN 10025 Acciai non legati laminati a caldo

MECH srl
 Via Pasteur, 16 - Reggio Emilia
 Tel. 0522/332903 - FAX 0522/1710466
 E-mail: info@strutture.info

Scale :
 See views

| | |
|------------------------------------------------------|------------------------------|
| Total: PROFILI STANDARD IMPIANTI FOTOVOLTAICI | Date: |
| Title: STAFFA TIPO 1 | Proj. : Menozzi Ing. Stefano |
| Details n°: | Desig.: SNA |
| File's name: | Drawing n° = vedi Titolo |
| | Revision n° 0 |





NORMATIVE DI RIFERIMENTO:

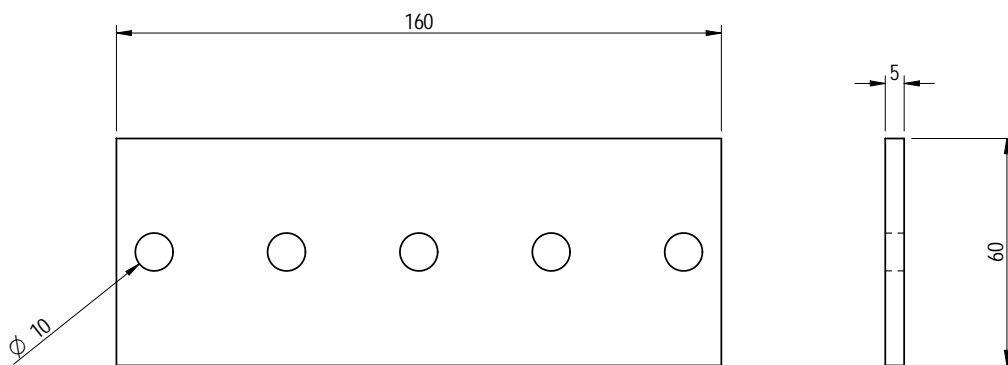
UNI 4600 Indicazione delle rugosità sui disegni

UNI7070 Acciai non legati per impieghi strutturali

UNI EN 22553 Rappresentazione simbolica delle saldature sui disegni

UNI EN 10025 Acciai non legati laminati a caldo

| | | | |
|--------------------------------------------------------------------------------------------------------------------------------------------------------------------------------------------------------------|------------|---------------------------------------------------------------------------------------------------------------|------------------------------|
| | | | |
| | | | |
| <i>DATE</i> | <i>No.</i> | <i>REVISION</i> | <i>BY</i> |
|  MECH srl Via Pasteur, 16 - Reggio Emilia Tel. 0522/332903 - FAX 0522/1710466 E-mail: info@strutture.info | |  Scale : See views | |
| Total: KIT STANDARD PER INTEGRAZIONE FOTOVOLTAICA | | | Date: |
| Title: PARTICOLARE DI MONTAGGIO CON STAFFA TIPO 2 | | | Proj. : Menozzi Ing. Stefano |
| Details n°: | | | Desig.: SNA |
| File's name: | | | Drawing n° = vedi Titolo |
| | | | Revision n° 0 |

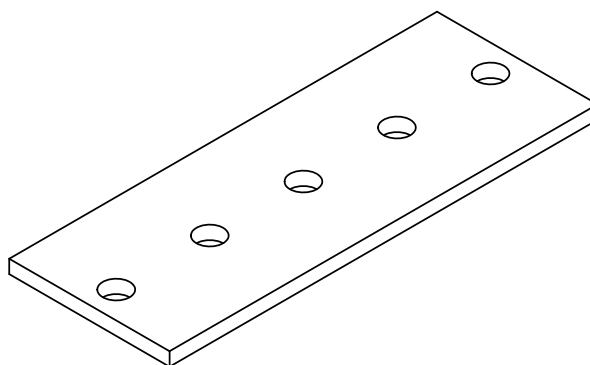


Piastra di contrasto per staffa tipo 2

Codice:

Materiale: AISI 304

Peso: 0,4kg





NORMATIVE DI RIFERIMENTO:

UNI 4600 Indicazione delle rugosità sui disegni

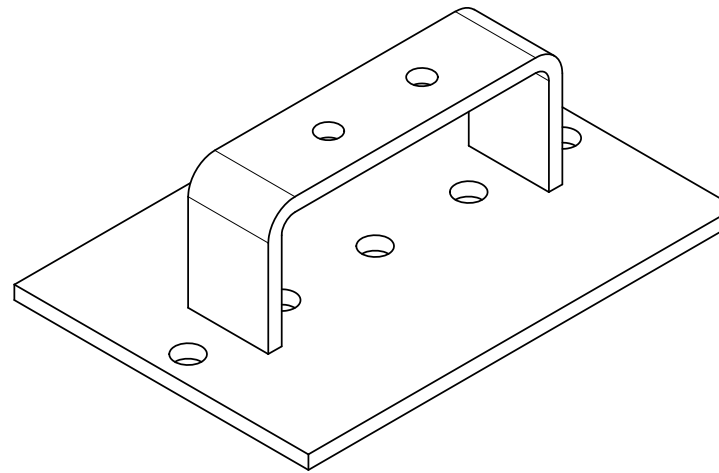
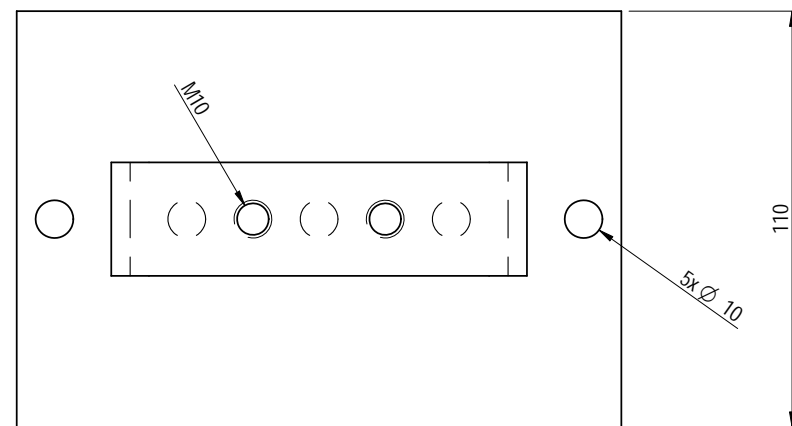
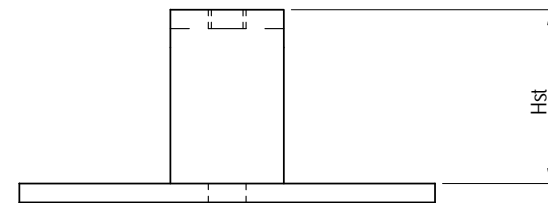
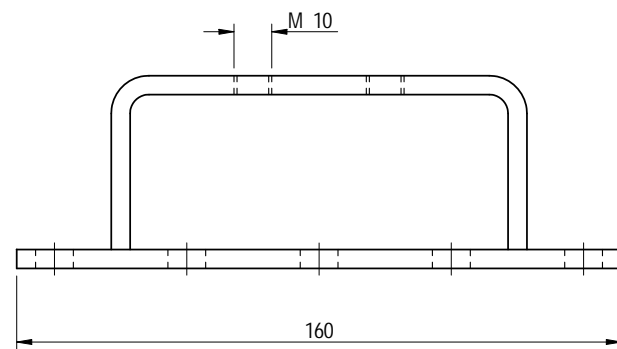
UNI 7070 Acciai non legati per impieghi strutturali

UNI EN 22553 Rappresentazione simbolica delle saldature sui disegni

UNI EN 10025 Acciai non legati laminati a caldo

| | | | |
|--------------------------------------------------------------------------------------------------------------------------------------------------------------------------------------------------------------|------------|----------------------------------------------------------------------------------------------------------------------|------------------------------|
| | | | |
| | | | |
| DATE | No. | REVISION | BY |
|  MECH srl Via Pasteur, 16 - Reggio Emilia Tel. 0522/332903 - FAX 0522/1710466 E-mail: info@strutture.info | |  Scale : See views | |
| Total: PROFILI STANDARD IMPIANTI FOTOVOLTAICI | | | Date: |
| Title: CONTRASTO PER STAFFA TIPO 2 | | | Proj. : Menozzi Ing. Stefano |
| Details n°: | | | Desig.: SNA |
| File's name: | | | Drawing n° = vedi Titolo |
| | | | Revision n° 0 |

| Codice | Descrizione | Disegno | Materiale | L1 (mm) | S (mm) | L2 (mm) | Hst (mm) | B (mm) | Passo max (mm) | Sbalzo max (mm) | Peso |
|--------|-------------------------------------------------------|---------------|-----------|------------|-----------|------------|-------------|-----------|-------------------|--------------------|---------|
| | STAFFA TIPO 2 x OMEGA L160x110x H46 xsp5 mat. AISI304 | STAFFA TIPO 2 | AISI304 | 160 | 5 | 110 | 46 | | | | 0.98 kg |
| | STAFFA TIPO 2 x OMEGA L160x110x H41 xsp5 mat. AISI304 | | AISI304 | 160 | 5 | 110 | 41 | | | | 0.97 kg |
| | STAFFA TIPO 2 x OMEGA L160x110x H38 xsp5 mat. AISI304 | | AISI304 | 160 | 5 | 110 | 38 | | | | 0.95 kg |
| | | | | - | - | - | | | | | kg |
| | | | | - | - | - | | | | | kg |
| | | | | - | - | - | | | | | kg |
| | CONTRASTO X STAFFA TIPO 2 L160x60 xsp5 mat. AISI304 | | AISI304 | 160 | 5 | 60 | | | | | 0.4 kg |
| | BARRA FILETTATA M8xL260 mat. AISI304 | | AISI304 | 200 | - | - | | | | | kg |



| | | | |
|--|--|--|--|
| | | | |
| | | | |
| | | | |
| | | | |
| | | | |
| | | | |
| | | | |
| | | | |

| DATE | No. | REVISION | BY |
|------|-----|----------|----|
| | | | |

Connections
Nuts and Bolts : 8.8 class galv. "DACROMET"
Welds : MAG or basic electrode as UNI 10011

typical filled welds

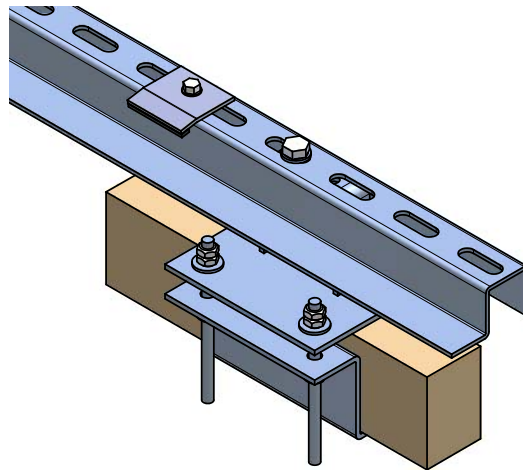
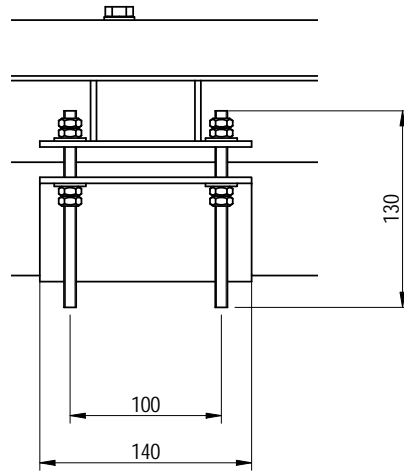
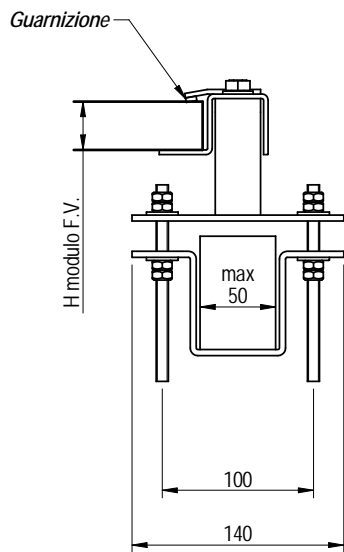
UNI 4600 Indicazione delle rugosità sui disegni
UNI7070 Acciai non legati per impieghi strutturali
UNI EN 22553 Rappresentazione simbolica delle saldature sui disegni
UNI EN 10025 Acciai non legati laminati a caldo

Thickness of the welds have to be equal to the minimum thickness of the pieces to be join where is not indicated differently.

MECH srl
Via Pasteur, 16 - Reggio Emilia
Tel. 0522/332903 - FAX 0522/1710466
E-mail: info@strutture.info

Scale :
See views

| | |
|-----------------------------------------------|------------------------------|
| Total: PROFILI STANDARD IMPIANTI FOTOVOLTAICI | Date: |
| Title: STAFFA TIPO 2 | Proj. : Menozzi Ing. Stefano |
| Details n°: | Desig.: SNA |
| File's name: | Drawing n° = vedi Titolo |
| | Revision n° 0 |





NORMATIVE DI RIFERIMENTO:

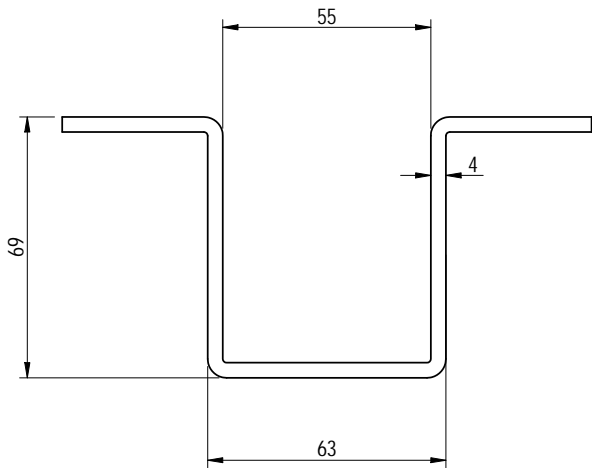
UNI 4600 Indicazione delle rugosità sui disegni

UNI7070 Acciai non legati per impieghi strutturali

UNI EN 22553 Rappresentazione simbolica delle saldature sui disegni

UNI EN 10025 Acciai non legati laminati a caldo

| | | | |
|--------------------------------------------------------------------------------------------------------------------------------------------------------------------------------------------------------------|------------|---------------------------------------------------------------------------------------------------------------|------------------------------|
| | | | |
| | | | |
| <i>DATE</i> | <i>No.</i> | <i>REVISION</i> | <i>BY</i> |
|  MECH srl Via Pasteur, 16 - Reggio Emilia Tel. 0522/332903 - FAX 0522/1710466 E-mail: info@strutture.info | |  Scale : See views | |
| Total: KIT STANDARD PER INTEGRAZIONE FOTOVOLTAICA | | | Date: |
| Title: PARTICOLARE DI MONTAGGIO CON STAFFA TIPO 3 | | | Proj. : Menozzi Ing. Stefano |
| Details n°: | | | Desig.: SNA |
| File's name: | | | Drawing n° = vedi Titolo |
| | | | Revision n° 0 |

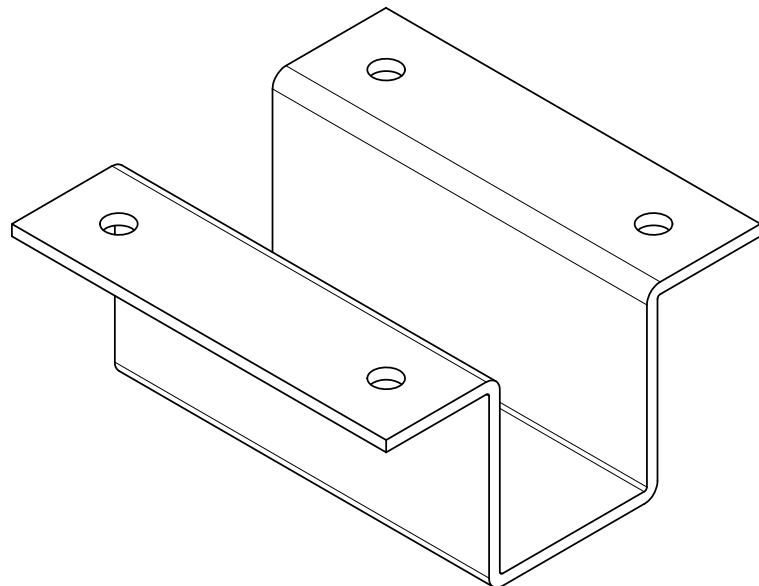


Piastra di contrasto ad omega per staffa tipo 3

Codice:

Materiale: AISI 304

Peso: 1,2 kg





NORMATIVE DI RIFERIMENTO:

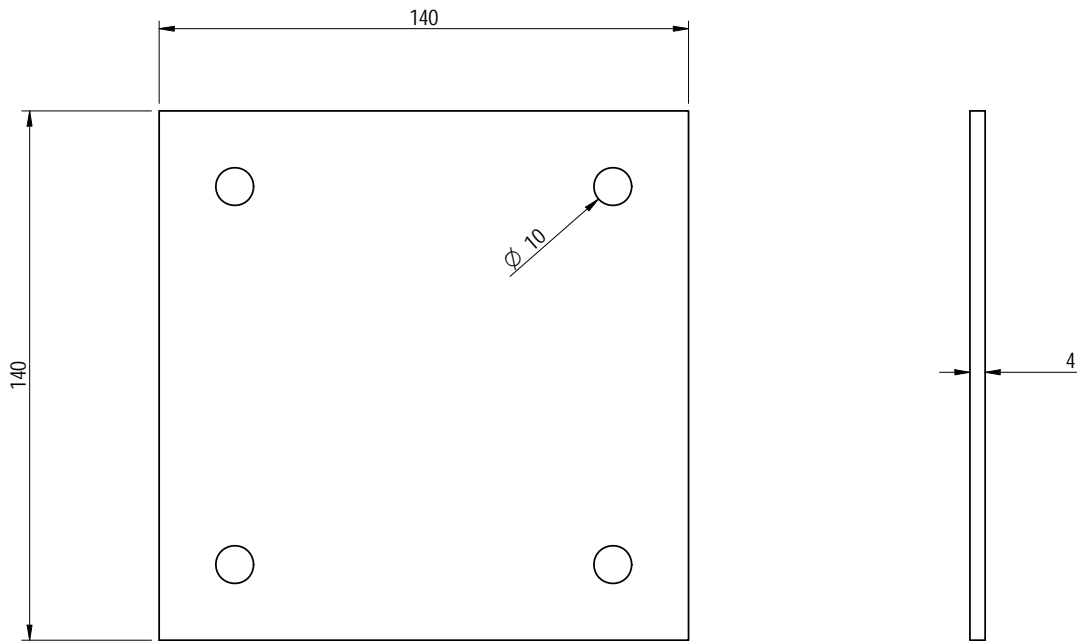
UNI 4600 Indicazione delle rugosità sui disegni

UNI 7070 Acciai non legati per impieghi strutturali

UNI EN 22553 Rappresentazione simbolica delle saldature sui disegni

UNI EN 10025 Acciai non legati laminati a caldo

| | | | |
|--------------------------------------------------------------------------------------------------------------------------------------------------------------------------------------------------------------|------------|----------------------------------------------------------------------------------------------------------------------|------------------------------|
| | | | |
| | | | |
| DATE | No. | REVISION | BY |
|  MECH srl Via Pasteur, 16 - Reggio Emilia Tel. 0522/332903 - FAX 0522/1710466 E-mail: info@strutture.info | |  Scale : See views | |
| Total: PROFILI STANDARD IMPIANTI FOTOVOLTAICI | | | Date: |
| Title: CONTRASTO AD OMEGA PER STAFFA TIPO 3 | | | Proj. : Menozzi Ing. Stefano |
| Details n°: | | | Desig.: SNA |
| File's name: | | | Drawing n° = vedi Titolo |
| | | | Revision n° 0 |

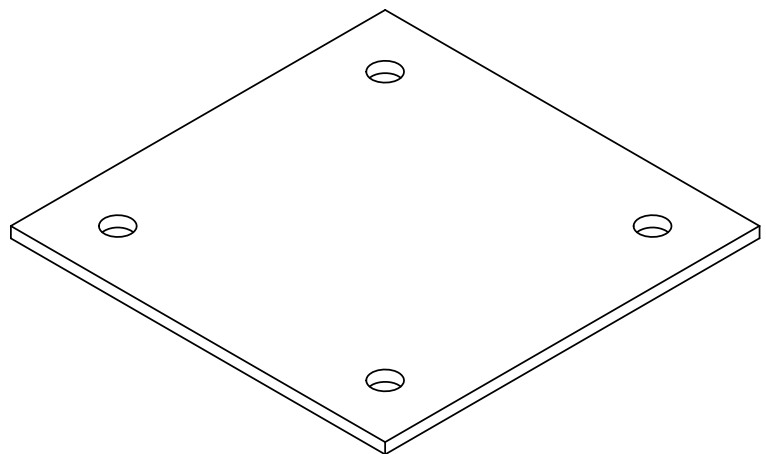


**Piastra di contrasto
piano per staffa tipo 3**

Codice:

Materiale: AISI 304

Peso: 0,62





NORMATIVE DI RIFERIMENTO:

UNI 4600 Indicazione delle rugosità sui disegni

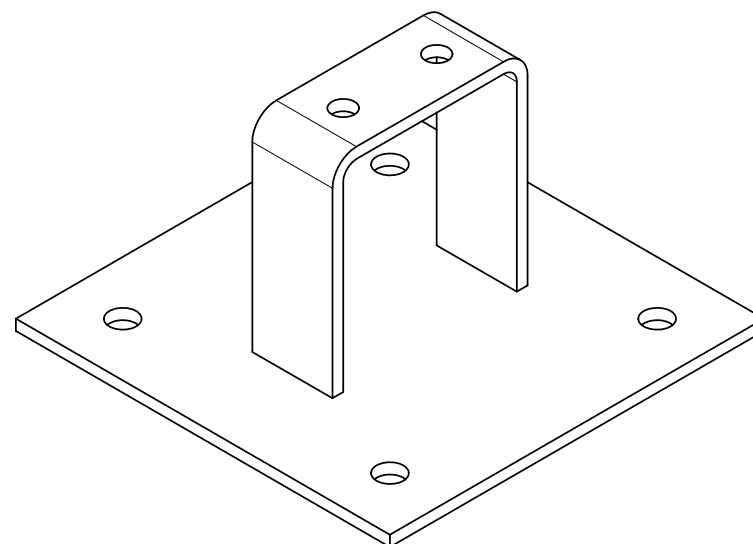
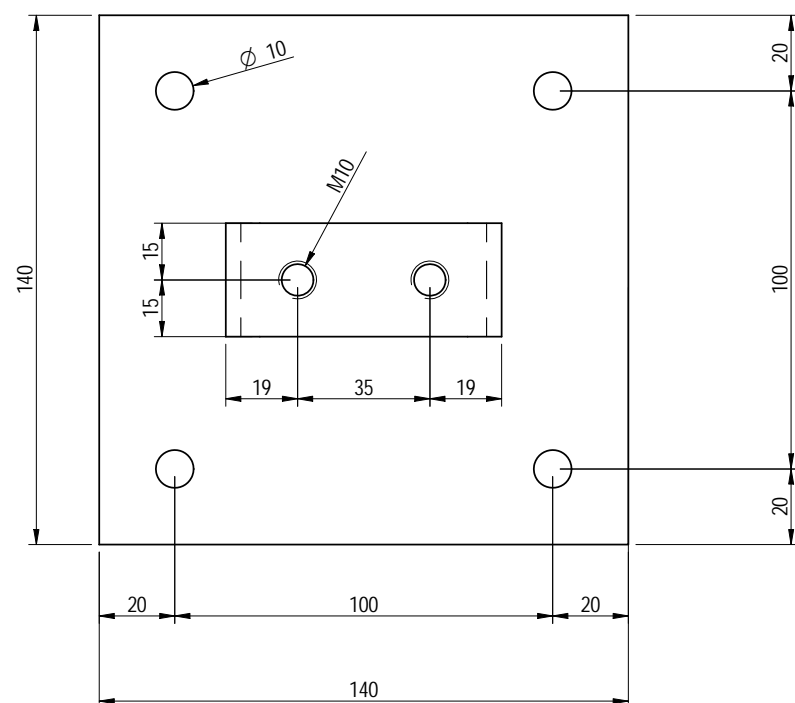
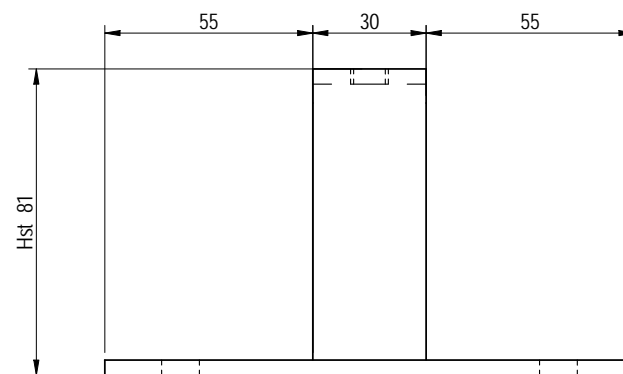
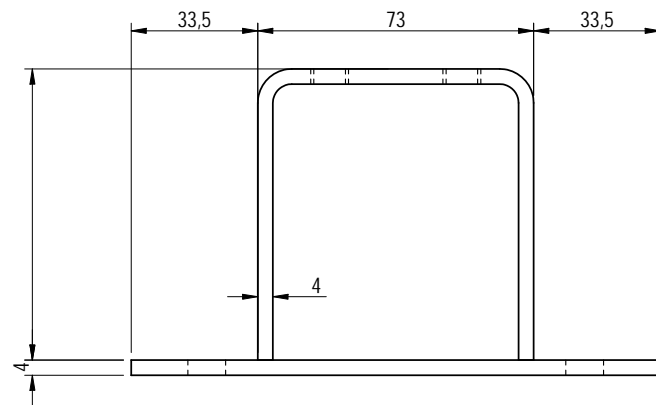
UNI7070 Acciai non legati per impieghi strutturali

UNI EN 22553 Rappresentazione simbolica delle saldature sui disegni

UNI EN 10025 Acciai non legati laminati a caldo

| | | | |
|--------------------------------------------------------------------------------------------------------------------------------------------------------------------------------------------------------------|------------|----------------------------------------------------------------------------------------------------------------------|------------------------------|
| | | | |
| | | | |
| DATE | No. | REVISION | BY |
|  MECH srl Via Pasteur, 16 - Reggio Emilia Tel. 0522/332903 - FAX 0522/1710466 E-mail: info@strutture.info | |  Scale : See views | |
| Total: PROFILI STANDARD PER IMPIANTI FOTOVOLTAICI | | | Date: |
| Title: CONTRASTO PIANO PER STAFFA TIPO 3 | | | Proj. : Menozzi Ing. Stefano |
| Details n°: | | | Desig.: SNA |
| File's name: | | | Drawing n° = vedi Titolo |
| | | | Revision n° 0 |

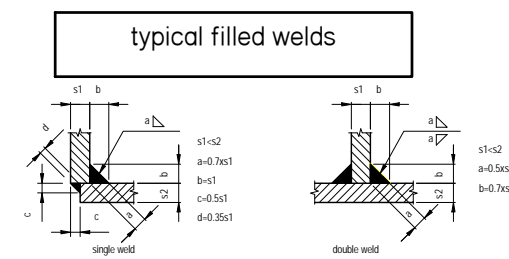
| Codice | Descrizione | Disegno | Materiale | L1 (mm) | S (mm) | L2 (mm) | Hst (mm) | B (mm) | Passo max (mm) | Sbalzo max (mm) | Peso |
|--------|---------------------------------------------------------------|---------------|-----------|---------|--------|---------|----------|--------|----------------|-----------------|---------|
| | STAFFA TIPO 3 x OMEGA L140x140x H57 xsp4 mat. AISI304 | STAFFA TIPO 3 | AISI304 | 140 | 4 | 140 | 57 | | | | 0.71 kg |
| | STAFFA TIPO 3 x OMEGA L140x140x H77 xsp4 mat. AISI304 | | AISI304 | 140 | 4 | 140 | 77 | | | | 0.81 kg |
| | STAFFA TIPO 3 x OMEGA L140x140x H97 xsp4 mat. AISI304 | | AISI304 | 140 | 4 | 140 | 97 | | | | 0.91 kg |
| | | | | - | - | - | | | | | kg |
| | | | | - | - | - | | | | | kg |
| | | | | - | - | - | | | | | kg |
| | CONTRASTO AD OMEGA X STAFFA TIPO 3 L140x140 xsp4 mat. AISI304 | | AISI304 | 140 | 4 | 140 | | | | | 1.2 kg |
| | CONTRASTO PIANO X STAFFA TIPO 3 L140x140 xsp4 mat. AISI304 | | AISI304 | 140 | 4 | 140 | | | | | 0.8 kg |
| | BARRA FILETTATA M8xL260 mat. AISI304 | | AISI304 | 200 | - | - | | | | | kg |



| | | | |
|--|--|--|--|
| | | | |
| | | | |
| | | | |
| | | | |
| | | | |
| | | | |

| DATE | No. | REVISION | BY |
|------|-----|----------|----|
| | | | |

Connections
Nuts and Bolts : 8.8 class galv. "DACROMET"
Welds : MAG or basic electrode as UNI 10011

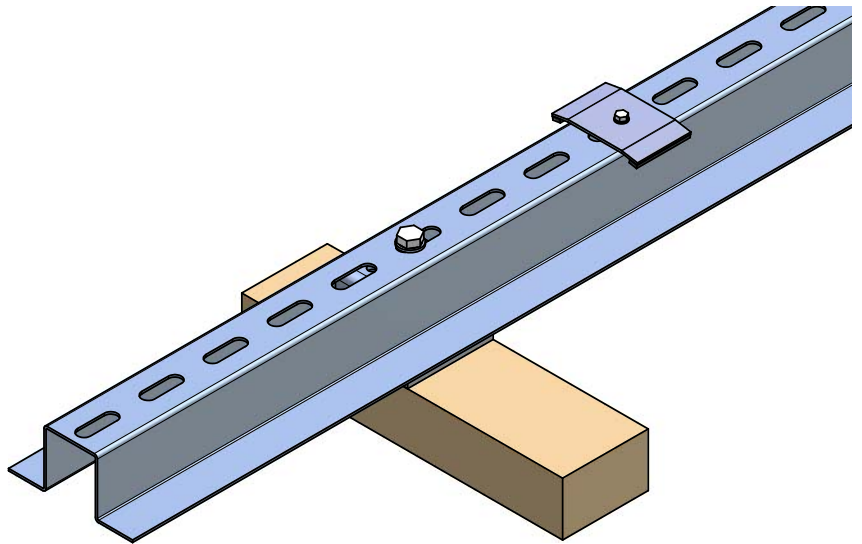
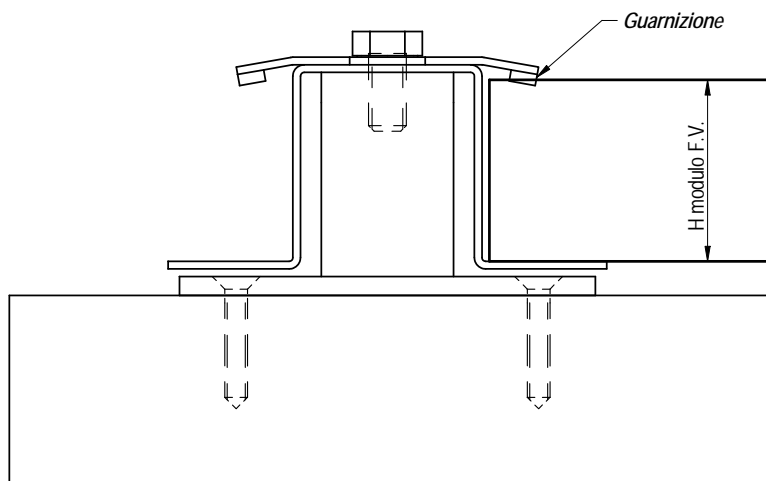


NORMATIVE DI RIFERIMENTO:
UNI 4600 Indicazione delle rugosità sui disegni
UNI7070 Acciai non legati per impieghi strutturali
UNI EN 22553 Rappresentazione simbolica delle saldature sui disegni
UNI EN 10025 Acciai non legati laminati a caldo

MECH srl
Via Pasteur, 16 - Reggio Emilia
Tel. 0522/332903 - FAX 0522/1710466
E-mail: info@strutture.info

Scale :
See views

| | |
|-----------------------------------------------|------------------------------|
| Total: PROFILI STANDARD IMPIANTI FOTOVOLTAICI | Date: |
| Title: STAFFA TIPO 3 | Proj. : Menozzi Ing. Stefano |
| Details n°: | Desig.: SNA |
| File's name: | Drawing n° = vedi Titolo |
| | Revision n° 0 |





NORMATIVE DI RIFERIMENTO:

UNI 4600 Indicazione delle rugosità sui disegni

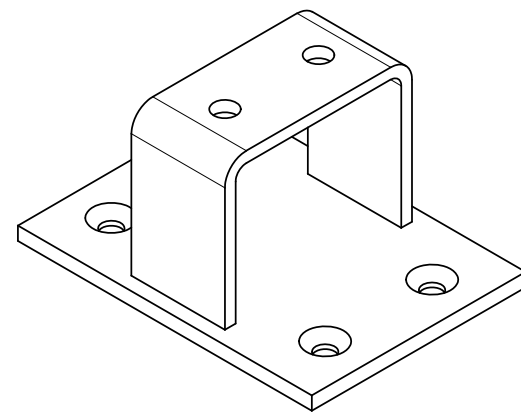
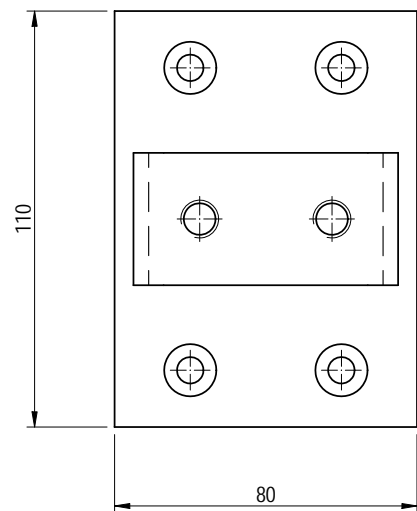
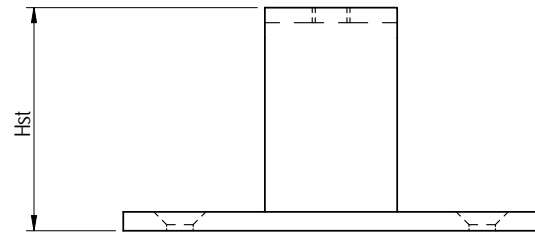
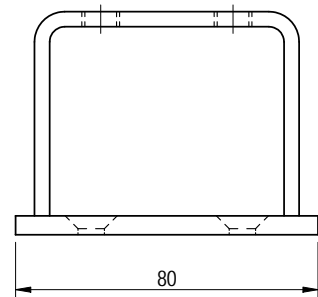
UNI 7070 Acciai non legati per impieghi strutturali

UNI EN 22553 Rappresentazione simbolica delle saldature sui disegni

UNI EN 10025 Acciai non legati laminati a caldo

| | | | |
|--------------------------------------------------------------------------------------------------------------------------------------------------------------------------------------------------------------|------------|-----------------|---------------------------------------------------------------------------------------------------------------|
| | | | |
| | | | |
| <i>DATE</i> | <i>No.</i> | <i>REVISION</i> | <i>BY</i> |
|  MECH srl Via Pasteur, 16 - Reggio Emilia Tel. 0522/332903 - FAX 0522/1710466 E-mail: info@strutture.info | | |  Scale : See views |
| Total: KIT STANDARD PER INTEGRAZIONE FOTOVOLTAICA | | | Date: |
| Title: PARTICOLARE DI MONTAGGIO CON STAFFA TIPO 4 | | | Proj. : Menozzi Ing. Stefano |
| Details n°: | | | Desig.: SNA |
| File's name: | | | Drawing n° = vedi Titolo |
| | | | Revision n° 0 |

| Codice | Descrizione | Disegno | Materiale | L1 (mm) | S (mm) | L2 (mm) | Hst (mm) | B (mm) | Passo max (mm) | Sbalzo max (mm) | Peso |
|--------|------------------------------------------------------|---------------|-----------|---------|--------|---------|----------|--------|----------------|-----------------|---------|
| | STAFFA TIPO 4 x OMEGA L110x80x H59 xsp5 mat. AISI304 | STAFFA TIPO 4 | AISI304 | 110 | 5 | 80 | 59 | | | | 0.52 kg |
| | STAFFA TIPO 4 x OMEGA L110x80x H xsp5 mat. AISI304 | | AISI304 | 110 | 5 | 80 | | | | | 0.62 kg |
| | STAFFA TIPO 4 x OMEGA L110x80x H xsp5 mat. AISI304 | | AISI304 | 110 | 5 | 80 | | | | | 0.82 kg |
| | | | | - | - | - | | | | | kg |
| | | | | - | - | - | | | | | kg |
| | | | | - | - | - | | | | | kg |
| | VITI A TESTA SVASATA D6x35 AUTOFILETTANTI INOX | | | | | | | | | | kg |

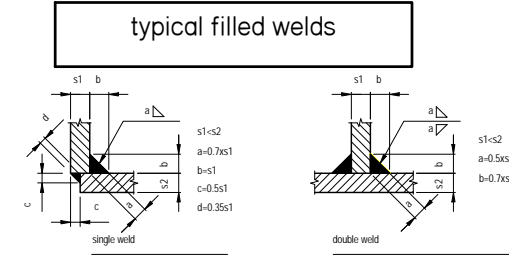


| | | | |
|--|--|--|--|
| | | | |
| | | | |
| | | | |
| | | | |
| | | | |
| | | | |

| DATE | No. | REVISION | BY |
|------|-----|----------|----|
| | | | |

Connections
 Nuts and Bolts : 8.8 class galv. "DACROMET"
 Welds : MAG or basic electrode as UNI 10011

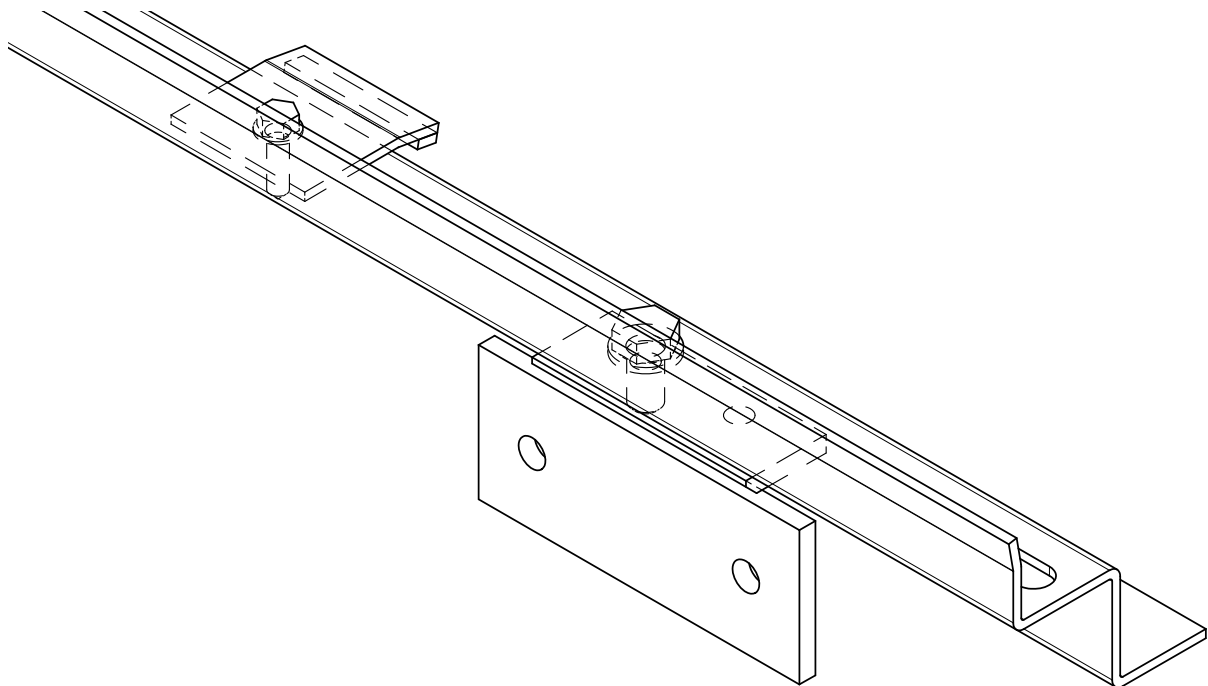
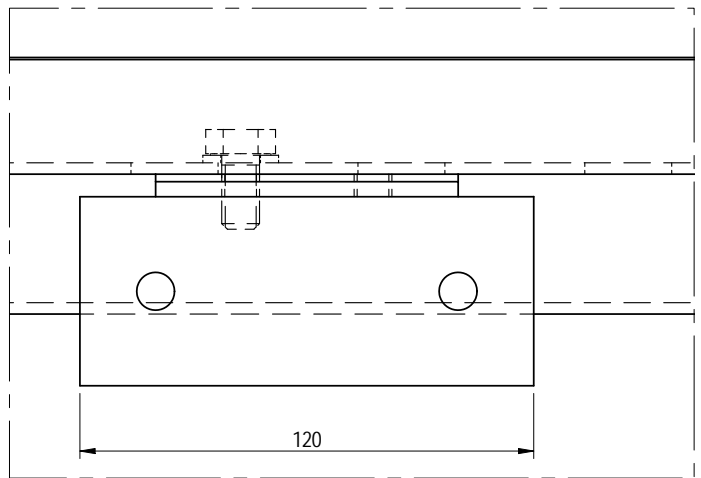
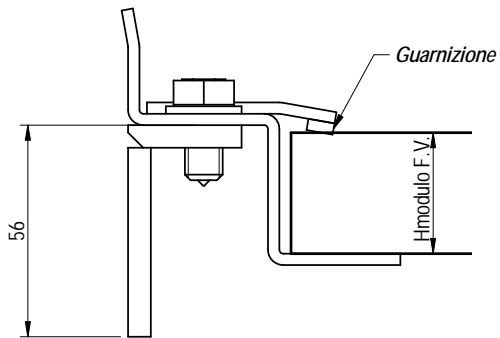
NORMATIVE DI RIFERIMENTO:
 UNI 4600 Indicazione delle rugosità sui disegni
 UNI7070 Acciai non legati per impieghi strutturali
 UNI EN 22553 Rappresentazione simbolica delle saldature sui disegni
 UNI EN 10025 Acciai non legati laminati a caldo



MECH srl
 Via Pasteur, 16 - Reggio Emilia
 Tel. 0522/332903 - FAX 0522/1710466
 E-mail: info@strutture.info



Scale :
 See views

| | |
|-----------------------------------------------|-----------------------------|
| Total: PROFILI STANDARD IMPIANTI FOTOVOLTAICI | Date: |
| Title: STAFFA TIPO 4 | Proj.: Menozzi Ing. Stefano |
| Details n°: | Desig.: SNA |
| File's name: | Drawing n° = vedi Titolo |
| | Revision n° 0 |

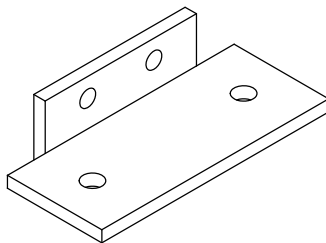
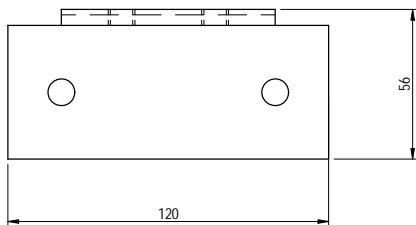
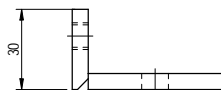
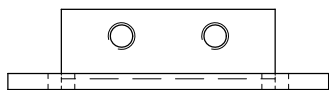


NORMATIVE DI RIFERIMENTO:

- UNI 4600 Indicazione delle rugosità sui disegni
- UNI 7070 Acciai non legati per impieghi strutturali
- UNI EN 22553 Rappresentazione simbolica delle saldature sui disegni
- UNI EN 10025 Acciai non legati laminati a caldo

| | | | |
|--------------------------------------------------------------------------------------------------------------------------------------------------------------------------------------------------------------|------------|---------------------------------------------------------------------------------------------------------------|------------------------------|
| | | | |
| | | | |
| <i>DATE</i> | <i>No.</i> | <i>REVISION</i> | <i>BY</i> |
|  MECH srl Via Pasteur, 16 - Reggio Emilia Tel. 0522/332903 - FAX 0522/1710466 E-mail: info@strutture.info | |  Scale : See views | |
| Total: KIT STANDARD PER INTEGRAZIONE FOTOVOLTAICA | | | Date: |
| Title: PARTICOLARE DI MONTAGGIO CON STAFFA TIPO 5 | | | Proj. : Menozzi Ing. Stefano |
| Details n°: | | | Desig.: SNA |
| File's name: | | | Drawing n° = vedi Titolo |
| | | | Revision n° 0 |

| Codice | Descrizione | Disegno | Materiale | L1 (mm) | S (mm) | L2 (mm) | Hst (mm) | B (mm) | Passo max (mm) | Sbalzo max (mm) | Peso |
|--------|--------------------------------------------------------------------|---------------|-----------|------------|-----------|------------|-------------|-----------|-------------------|--------------------|---------|
| | STAFFA TIPO 5 x PROFILO INTEGRATO DI PARETE L120x56x H30 xsp6 mat. | STAFFA TIPO 5 | AISI304 | 120 | 6 | 56 | 30 | | | | 0.37 kg |
| | | | | | | | | | | | kg |



| DATE | No. | REVISION | BY |
|------|-----|----------|----|
| | | | |
| | | | |
| | | | |
| | | | |

Connections
Nuts and Bolts : 8.8 class galv. "DACROMET"
Welds : MAG or basic electrode as UNI 10011

typical filled welds

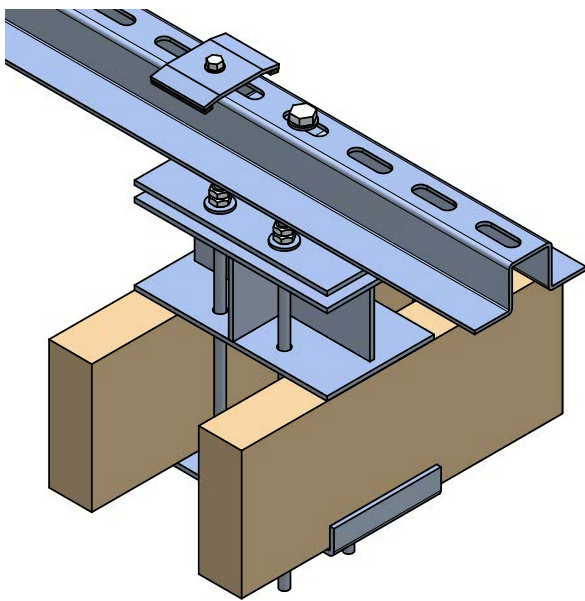
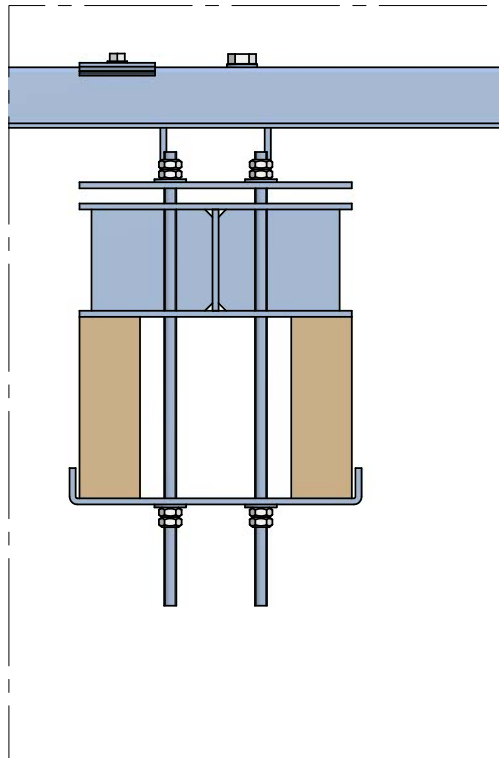
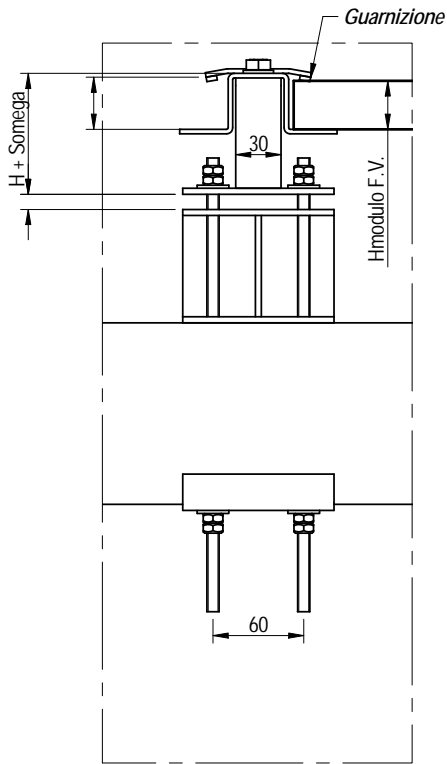
single weld double weld

Thickness of the welds have to be equal to the minimum thickness of the pieces to be join where is not indicated differently.

NORMATIVE DI RIFERIMENTO:
UNI 4600 Indicazione delle rugosità sui disegni
UNI7070 Acciai non legati per impieghi strutturali
UNI EN 22553 Rappresentazione simbolica delle saldature sui disegni
UNI EN 10025 Acciai non legati laminati a caldo



| | |
|------------------------------------------------------------------------------------------------------------------------------|--------------------------|
| MECH srl Via Pasteur, 16 - Reggio Emilia Tel. 0522/332903 - FAX 0522/1710466 E-mail: info@struttura.info | Scale : See views |
| | |

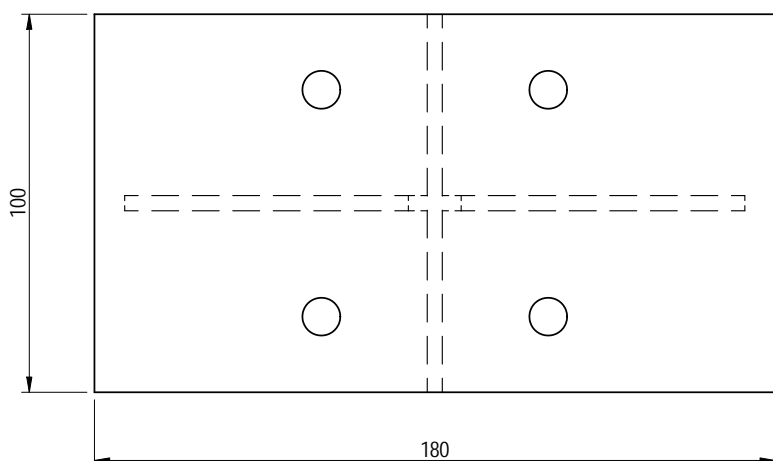
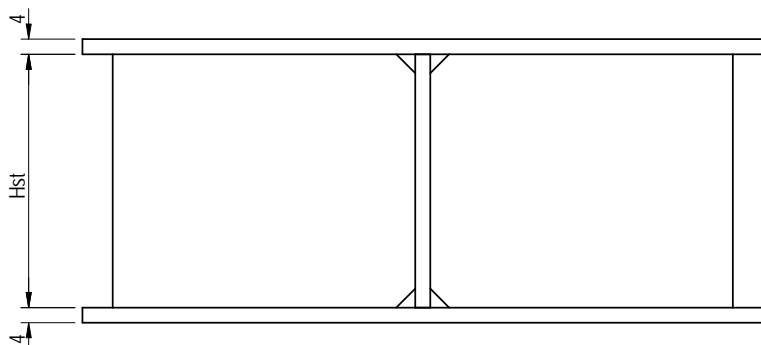
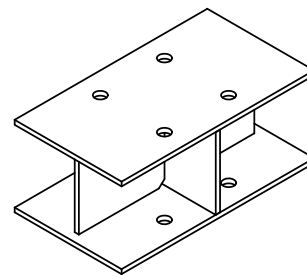
| | |
|----------------------|----------------------------------------------|
| Title: STAFFA TIPO 5 | Date: |
| Details n°: | Proj. : Merozzi Ing. Stefano Desig. : SNA |
| File's name: | Drawing n° = vedi Titolo Revision n° 0 |



NORMATIVE DI RIFERIMENTO:

- UNI 4600 Indicazione delle rugosità sui disegni
- UNI 7070 Acciai non legati per impieghi strutturali
- UNI EN 22553 Rappresentazione simbolica delle saldature sui disegni
- UNI EN 10025 Acciai non legati laminati a caldo

| | | | |
|--------------------------------------------------------------------------------------------------------------------------------------------------------------------------------------------------------------|------------|---------------------------------------------------------------------------------------------------------------|------------------------------|
| | | | |
| | | | |
| <i>DATE</i> | <i>No.</i> | <i>REVISION</i> | <i>BY</i> |
|  MECH srl Via Pasteur, 16 - Reggio Emilia Tel. 0522/332903 - FAX 0522/1710466 E-mail: info@strutture.info | |  Scale : See views | |
| Total: KIT STANDARD PER INTEGRAZIONE FOTOVOLTAICA | | | Date: |
| Title: PARTICOLARE DI MONTAGGIO CON STAFFA TIPO 6 | | | Proj. : Menozzi Ing. Stefano |
| Details n°: | | | Desig.: SNA |
| File's name: | | | Drawing n° = vedi Titolo |
| | | | Revision n° 0 |



*Spessore per staffa
tipo 6*

Codice:

Materiale: AISI 304

Peso: 1.7 kg

Hst = variabile



NORMATIVE DI RIFERIMENTO:

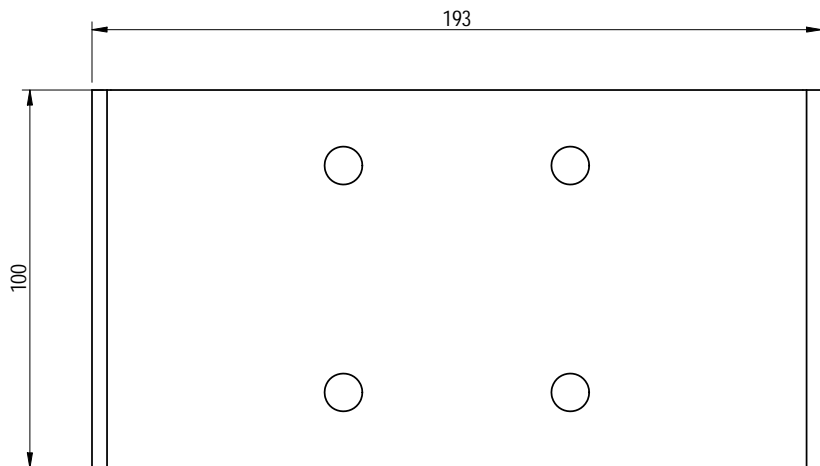
UNI 4600 Indicazione delle rugosità sui disegni

UNI7070 Acciai non legati per impieghi strutturali

UNI EN 22553 Rappresentazione simbolica delle saldature sui disegni

UNI EN 10025 Acciai non legati laminati a caldo

| | | | |
|--------------------------------------------------------------------------------------------------------------------------------------------------------------------------------------------------------------|------------|---------------------------------------------------------------------------------------------------------------|------------------------------|
| | | | |
| | | | |
| <i>DATE</i> | <i>No.</i> | <i>REVISION</i> | <i>BY</i> |
|  MECH srl Via Pasteur, 16 - Reggio Emilia Tel. 0522/332903 - FAX 0522/1710466 E-mail: info@strutture.info | |  Scale : See views | |
| Total: PROFILI STANDARD PER IMPIANTI FOTOVOLTAICI | | | Date: |
| Title: SPESSORE PER STAFFA TIPO 6 | | | Proj. : Menozzi Ing. Stefano |
| Details n°: | | | Desig.: SNA |
| File's name: | | | Drawing n° = vedi Titolo |
| | | | Revision n° 0 |

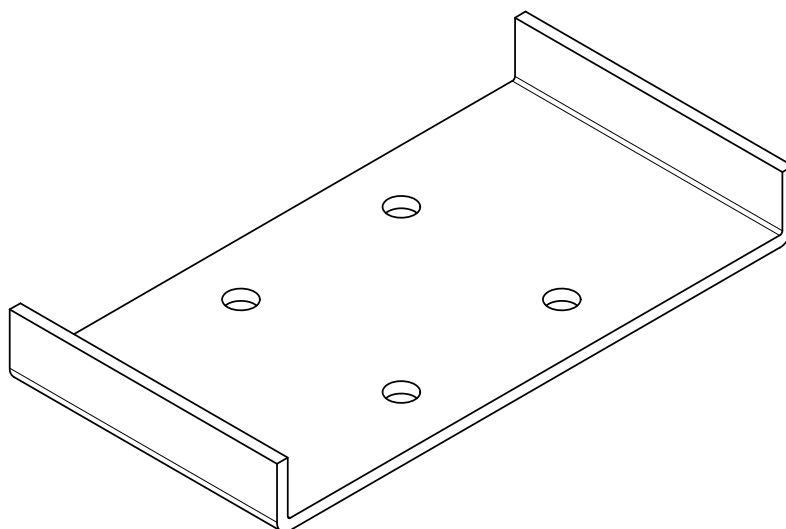


**Piastra di contrasto
per staffa tipo 6**

Codice:

Materiale: AISI 304

Peso: 0,73kg





NORMATIVE DI RIFERIMENTO:

UNI 4600 Indicazione delle rugosità sui disegni

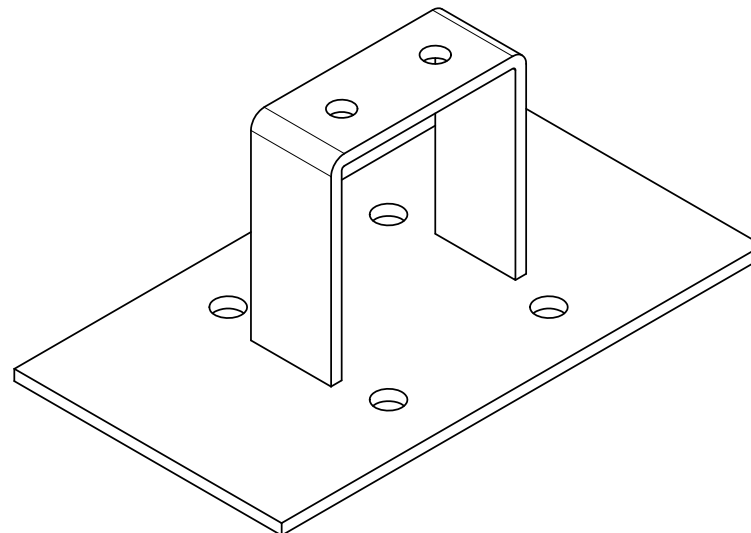
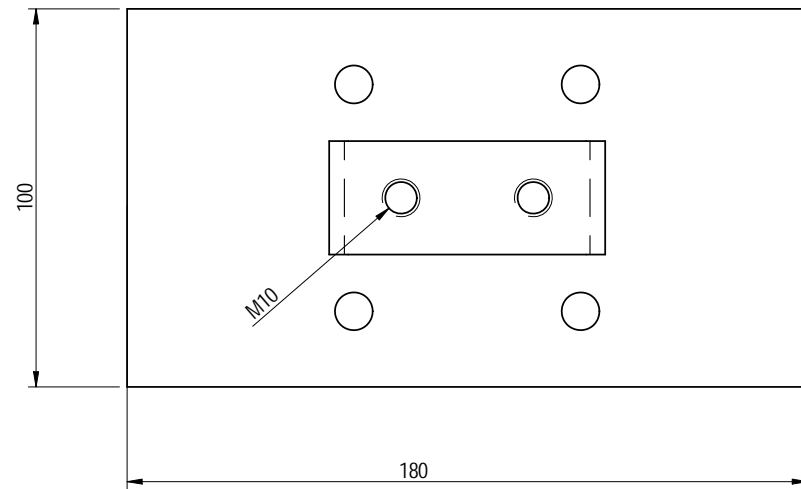
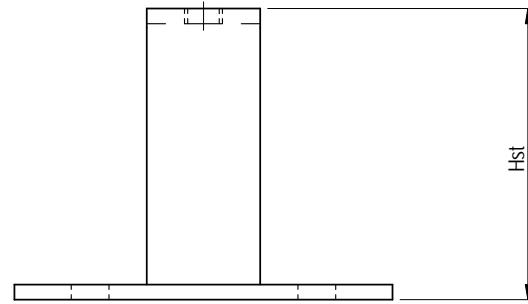
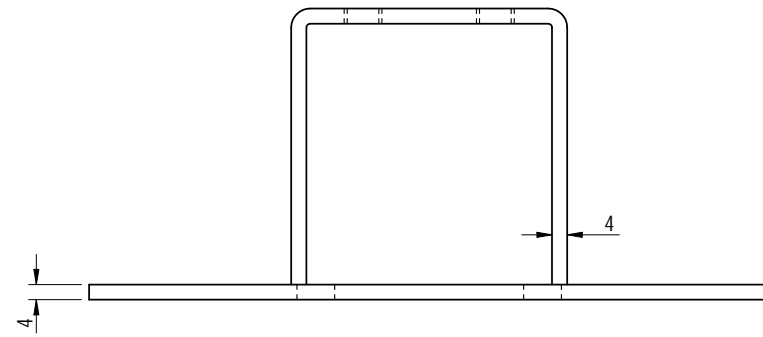
UNI7070 Acciai non legati per impieghi strutturali

UNI EN 22553 Rappresentazione simbolica delle saldature sui disegni

UNI EN 10025 Acciai non legati laminati a caldo

| | | | |
|--------------------------------------------------------------------------------------------------------------------------------------------------------------------------------------------------------------|------------|----------------------------------------------------------------------------------------------------------------------|------------------------------|
| | | | |
| | | | |
| DATE | No. | REVISION | BY |
|  MECH srl Via Pasteur, 16 - Reggio Emilia Tel. 0522/332903 - FAX 0522/1710466 E-mail: info@strutture.info | |  Scale : See views | |
| Total: PROFILI STANDARD PER IMPIANTI FOTOVOLTAICI | | | Date: |
| Title: CONTRASTO PER STAFFA TIPO 6 | | | Proj. : Menozzi Ing. Stefano |
| Details n°: | | | Desig.: SNA |
| File's name: | | | Drawing n° = vedi Titolo |
| | | | Revision n° 0 |

| Codice | Descrizione | Disegno | Materiale | L1 (mm) | S (mm) | L2 (mm) | Hst (mm) | B (mm) | Passo max (mm) | Sbalzo max (mm) | Peso |
|--------|---------------------------------------------------------------------|---------------|-----------|---------|--------|---------|----------|--------|----------------|-----------------|---------|
| | STAFFA TIPO 6 x OMEGA L180x100x H59 xsp4 mat. AISI304 | STAFFA TIPO 6 | AISI304 | 180 | 4 | 100 | 59 | | | | 0.52 kg |
| | STAFFA TIPO 6 x OMEGA L180x100x H79 xsp4 mat. AISI304 | | AISI304 | 180 | 4 | 100 | 79 | | | | 0.62 kg |
| | STAFFA TIPO 6 x OMEGA L180x100x H99 xsp4 mat. AISI304 | | AISI304 | 180 | 4 | 100 | 99 | | | | 0.82 kg |
| | | | | - | - | - | | | | | kg |
| | | | | - | - | - | | | | | kg |
| | | | | - | - | - | | | | | kg |
| | VITI A TESTA SVASATA D6x35 AUTOFILETTANTI INOX | | | | | | | | | | kg |
| | SPESSORE x STAFFA TIPO 6 x OMEGA L180x100x H var. xsp4 mat. AISI304 | | AISI304 | 180 | 4 | 100 | var. | | | | kg |
| | CONTRASTO x STAFFA TIPO 6 x OMEGA L185x100x H24 xsp4 mat. AISI304 | | AISI304 | 185 | 4 | 100 | 24 | | | | 0.73 kg |



| | | | |
|--|--|--|--|
| | | | |
| | | | |
| | | | |
| | | | |
| | | | |
| | | | |
| | | | |
| | | | |
| | | | |
| | | | |

| DATE | No. | REVISION | BY |
|------|-----|----------|----|
| | | | |

Connections
Nuts and Bolts : 8.8 class galv. "DACROMET"
Welds : MAG or basic electrode as UNI 10011

typical filled welds

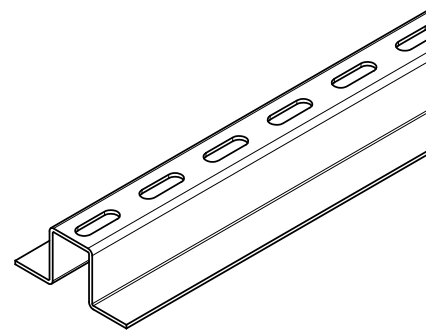
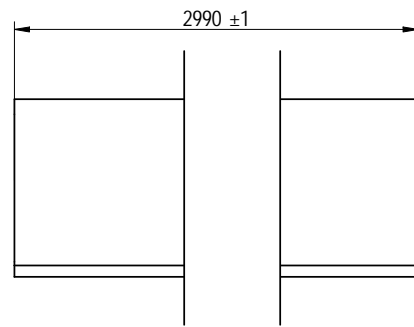
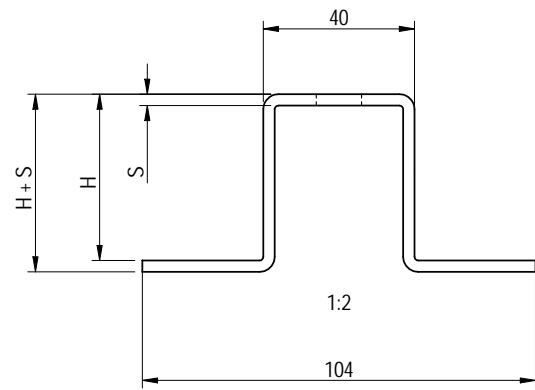
UNI 4600 Indicazione delle rugosità sui disegni
UNI7070 Acciai non legati per impieghi strutturali
UNI EN 22553 Rappresentazione simbolica delle saldature sui disegni
UNI EN 10025 Acciai non legati laminati a caldo

Thickness of the welds have to be equal to the minimum thickness of the pieces to be join where is not indicated differently.

| | |
|------------------------------------------------------------------------------------------------------------------------------|--------------------------|
| MECH srl Via Pasteur, 16 - Reggio Emilia Tel. 0522/332903 - FAX 0522/1710466 E-mail: info@strutture.info | Scale : See views |
| | |

| | |
|------------------------------------------------------|------------------------------|
| Total: PROFILI STANDARD IMPIANTI FOTOVOLTAICI | Date: |
| Title: STAFFA TIPO 6 | Proj. : Menozzi Ing. Stefano |
| Details n°: | Desig.: SNA |
| File's name: | Drawing n° = vedi Titolo |
| | Revision n° 0 |

| Codice | Descrizione | Disegno | Materiale | H (mm) | S (mm) | H modulo (mm) | A (mm) | B (mm) | Passo max (mm) | Sbalzo max (mm) | Peso |
|--------|------------------------------------------------|----------------|-----------------|--------|--------|---------------|--------|--------|----------------|-----------------|-----------|
| | OMEGA 35x46x40x46x35 xsp2 mat. AISI304 | OMEGA SERIE 40 | AISI304 | 44 | 2 | 40-42 | | | | | 2.68 kg/m |
| | OMEGA 35x47x40x47x35 xsp3 mat. AISI304 | | AISI304 | 44 | 3 | 40-42 | | | | | 4.02 kg/m |
| | OMEGA 35x46x40x46x35 xsp2 mat. EN AW 5754 H111 | | EN AW 5754 H111 | 44 | 2 | 40-42 | | | | | 0.90 kg/m |
| | OMEGA 35x47x40x47x35 xsp3 mat. EN AW 5754 H111 | | EN AW 5754 H111 | 44 | 3 | 40-42 | | | | | 1.36 kg/m |
| | OMEGA 35x43x40x43x35 xsp2 mat. AISI304 | | AISI304 | 41 | 2 | 37-40 | | | | | 2.68 kg/m |
| | OMEGA 35x44x40x44x35 xsp3 mat. AISI304 | | AISI304 | 41 | 3 | 37-40 | | | | | 4.02 kg/m |
| | OMEGA 35x43x40x43x35 xsp2 mat. EN AW 5754 H111 | | EN AW 5754 H111 | 41 | 2 | 37-40 | | | | | 0.90 kg/m |
| | OMEGA 35x44x40x44x35 xsp3 mat. EN AW 5754 H111 | | EN AW 5754 H111 | 41 | 3 | 37-40 | | | | | 1.36 kg/m |
| | OMEGA 35x40x40x40x35 xsp2 mat. AISI304 | | AISI304 | 38 | 2 | 34-37 | | | | | 2.68 kg/m |
| | OMEGA 35x41x40x41x35 xsp3 mat. AISI304 | | AISI304 | 38 | 3 | 34-37 | | | | | 4.02 kg/m |
| | OMEGA 35x40x40x40x35 xsp2 mat. EN AW 5754 H111 | | EN AW 5754 H111 | 38 | 2 | 34-37 | | | | | 0.90 kg/m |
| | OMEGA 35x41x40x41x35 xsp3 mat. EN AW 5754 H111 | | EN AW 5754 H111 | 38 | 3 | 34-37 | | | | | 1.36 kg/m |



| | | | |
|--|--|--|--|
| | | | |
| | | | |
| | | | |
| | | | |
| | | | |

| DATE | No. | REVISION | BY |
|------|-----|----------|----|
| | | | |

Connections
Nuts and Bolts : 8.8 class galv. "DACROMET"
Welds : MAG or basic electrode as UNI 10011

typical filled welds

single weld: $s1 < s2$, $a = 0.7s1$, $b = s1$, $c = 0.5s1$, $d = 0.35s1$

double weld: $s1 < s2$, $a = 0.5s1$, $b = 0.7s1$

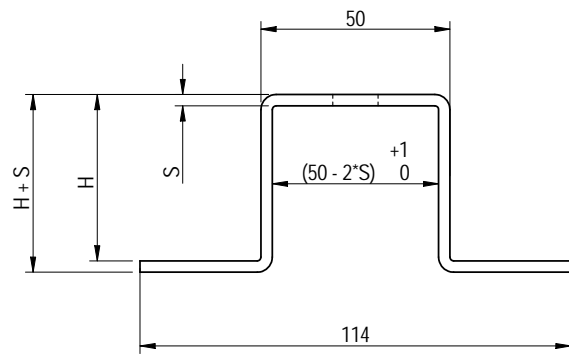
Thickness of the welds have to be equal to the minimum thickness of the pieces to be join where is not indicated differently.

NORMATIVE DI RIFERIMENTO:
UNI 4600 Indicazione delle rugosità sui disegni
UNI 7070 Acciai non legati per impieghi strutturali
UNI EN 22553 Rappresentazione simbolica delle saldature sui disegni
UNI EN 10025 Acciai non legati laminati a caldo

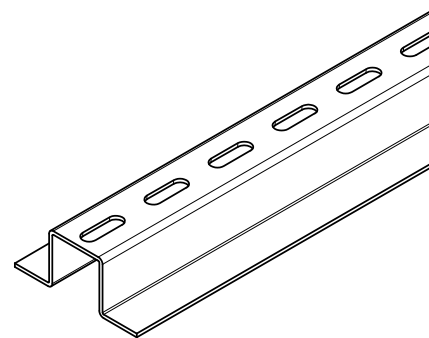
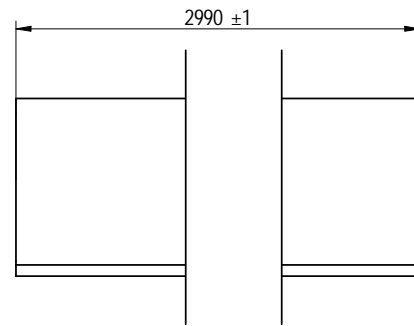
| | |
|--------------------------------------------------------------------------------------------------------------------------|----------------------|
| MECH srl Via Pasteur, 16 - Reggio Emilia Tel. 0522/332903 - FAX 0522/1710466 E-mail: info@strutture.info | Scale : See views |
| | |

| | |
|------------------------------------------------------|---------------------------------------------|
| Total: PROFILI STANDARD IMPIANTI FOTOVOLTAICI | Date: |
| Title: PROFILO OMEGA SERIE 40 | Proj. : Menozzi Ing. Stefano Desig.: SNA |
| Details n°: | Drawing n° OMEGA SERIE 40 |
| File's name: | Revision n° 0 |

| Codice | Descrizione | Disegno | Materiale | H (mm) | S (mm) | H modulo (mm) | A (mm) | B (mm) | Passo max (mm) | Sbalzo max (mm) | Peso |
|--------|------------------------------------------------|----------------|-----------------|--------|--------|---------------|--------|--------|----------------|-----------------|-----------|
| | OMEGA 35x46x50x46x35 xsp2 mat. AISI304 | OMEGA SERIE 50 | AISI304 | 44 | 2 | 40-42 | | | | | 3.06 kg/m |
| | OMEGA 35x47x50x47x35 xsp3 mat. AISI304 | | AISI304 | 44 | 3 | 40-42 | | | | | 4.59 kg/m |
| | OMEGA 35x46x50x46x35 xsp2 mat. EN AW 5754 H111 | | EN AW 5754 H111 | 44 | 2 | 40-42 | | | | | 1.03 kg/m |
| | OMEGA 35x47x50x47x35 xsp3 mat. EN AW 5754 H111 | | EN AW 5754 H111 | 44 | 3 | 40-42 | | | 1400 | 650 | 1.55 kg/m |
| | OMEGA 35x43x50x43x35 xsp2 mat. AISI304 | | AISI304 | 41 | 2 | 37-40 | | | | | 3.06 kg/m |
| | OMEGA 35x44x50x44x35 xsp3 mat. AISI304 | | AISI304 | 41 | 3 | 37-40 | | | | | 4.59 kg/m |
| | OMEGA 35x43x50x43x35 xsp2 mat. EN AW 5754 H111 | | EN AW 5754 H111 | 41 | 2 | 37-40 | | | | | 1.03 kg/m |
| | OMEGA 35x44x50x44x35 xsp3 mat. EN AW 5754 H111 | | EN AW 5754 H111 | 41 | 3 | 37-40 | | | 1400 | 650 | 1.55 kg/m |
| | OMEGA 35x40x50x40x35 xsp2 mat. AISI304 | | AISI304 | 38 | 2 | 34-37 | | | | | 2.68 kg/m |
| | OMEGA 35x41x50x41x35 xsp3 mat. AISI304 | | AISI304 | 38 | 3 | 34-37 | | | | | 4.02 kg/m |
| | OMEGA 35x40x50x40x35 xsp2 mat. EN AW 5754 H111 | | EN AW 5754 H111 | 38 | 2 | 34-37 | | | | | 1.03 kg/m |
| | OMEGA 35x41x50x41x35 xsp3 mat. EN AW 5754 H111 | | EN AW 5754 H111 | 38 | 3 | 34-37 | | | 1400 | 650 | 1.55 kg/m |
| | OMEGA 35x54x50x54x35 xsp2 mat. AISI304 | | AISI304 | 52 | 2 | 48-51 | | | | | 3.32 kg/m |
| | OMEGA 35x55x50x55x35 xsp3 mat. AISI304 | | AISI304 | 52 | 3 | 48-51 | | | | | 4.98 kg/m |
| | OMEGA 35x54x50x54x35 xsp2 mat. EN AW 5754 H111 | | EN AW 5754 H111 | 52 | 2 | 48-51 | | | | | 1.08 kg/m |
| | OMEGA 35x55x50x55x35 xsp3 mat. EN AW 5754 H111 | | EN AW 5754 H111 | 52 | 3 | 48-51 | | | 1400 | 650 | 1.62 kg/m |



1:2



| | | | |
|--|--|--|--|
| | | | |
| | | | |
| | | | |
| | | | |
| | | | |

| DATE | No. | REVISION | BY |
|------|-----|----------|----|
| | | | |

Connections
 Nuts and Bolts : 8.8 class galv. "DACROMET"
 Welds : MAG or basic electrode as UNI 10011

typical filled welds

single weld: a=0.7s1, b=s1, c=0.5s1, d=0.35s1
 double weld: a=0.5s1, b=0.7s1

Thickness of the welds have to be equal to the minimum thickness of the pieces to be join where is not indicated differently.

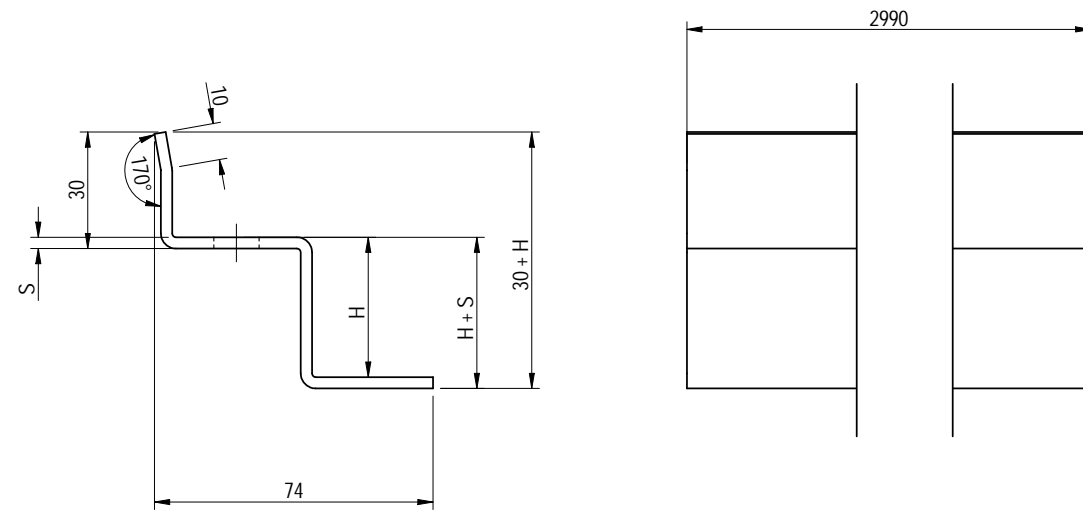
NORMATIVE DI RIFERIMENTO:
 UNI 4600 Indicazione delle rugosità sui disegni
 UNI7070 Acciai non legati per impieghi strutturali
 UNI EN 22553 Rappresentazione simbolica delle saldature sui disegni
 UNI EN 10025 Acciai non legati laminati a caldo

MECH srl
 Via Pasteur, 16 - Reggio Emilia
 Tel. 0522/332903 - FAX 0522/1710466
 E-mail: info@strutture.info

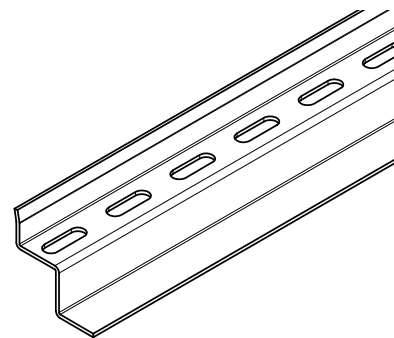
Scale :
 See views

| | |
|------------------------------------------------------|---------------------------------------------|
| Total: PROFILI STANDARD IMPIANTI FOTOVOLTAICI | Date: |
| Title: PROFILO OMEGA SERIE 50 | Proj. : Menozzi Ing. Stefano Desig.: SNA |
| Details n°: | Drawing n° OMEGA SERIE 50 |
| File's name: | Revision n° 0 |

| Codice | Descrizione | Disegno | Materiale | H (mm) | S (mm) | H modulo (mm) | A (mm) | B (mm) | Passo max (mm) | Sbalzo max (mm) | Peso |
|--------|-------------------------------------------------------------------|----------------------------|-----------------|--------|--------|---------------|--------|--------|----------------|-----------------|-----------|
| | PROFILO INTEGRATO DI PARETE 30x40x46x35 xsp2 mat. AISI304 | PROFILO DI PARETE SERIE 40 | AISI304 | 44 | 2 | 40-42 | | | | | 1.87 kg/m |
| | PROFILO INTEGRATO DI PARETE 30x40x47x35 xsp3 mat. AISI304 | | AISI304 | 44 | 3 | 40-42 | | | | | 2.81 kg/m |
| | PROFILO INTEGRATO DI PARETE 30x40x46x35 xsp2 mat. EN AW 5754 H111 | | EN AW 5754 H111 | 44 | 2 | 40-42 | | | | | 0.65 kg/m |
| | PROFILO INTEGRATO DI PARETE 30x40x47x35 xsp3 mat. EN AW 5754 H111 | | EN AW 5754 H111 | 44 | 3 | 40-42 | | | | | 0.98 kg/m |
| | PROFILO INTEGRATO DI PARETE 30x40x43x35 xsp2 mat. AISI304 | | AISI304 | 41 | 2 | 37-40 | | | | | 1.87 kg/m |
| | PROFILO INTEGRATO DI PARETE 30x40x44x35 xsp3 mat. AISI304 | | AISI304 | 41 | 3 | 37-40 | | | | | 2.81 kg/m |
| | PROFILO INTEGRATO DI PARETE 30x40x43x35 xsp2 mat. EN AW 5754 H111 | | EN AW 5754 H111 | 41 | 2 | 37-40 | | | | | 0.65 kg/m |
| | PROFILO INTEGRATO DI PARETE 30x40x44x35 xsp3 mat. EN AW 5754 H111 | | EN AW 5754 H111 | 41 | 3 | 37-40 | | | | | 0.98 kg/m |
| | PROFILO INTEGRATO DI PARETE 30x40x40x35 xsp2 mat. AISI304 | | AISI304 | 38 | 2 | 34-37 | | | | | 1.87 kg/m |
| | PROFILO INTEGRATO DI PARETE 30x40x41x35 xsp3 mat. AISI304 | | AISI304 | 38 | 3 | 34-37 | | | | | 2.81 kg/m |
| | PROFILO INTEGRATO DI PARETE 30x40x40x35 xsp2 mat. EN AW 5754 H111 | | EN AW 5754 H111 | 38 | 2 | 34-37 | | | | | 0.65 kg/m |
| | PROFILO INTEGRATO DI PARETE 30x40x41x35 xsp3 mat. EN AW 5754 H111 | | EN AW 5754 H111 | 38 | 3 | 34-37 | | | | | 0.98 kg/m |

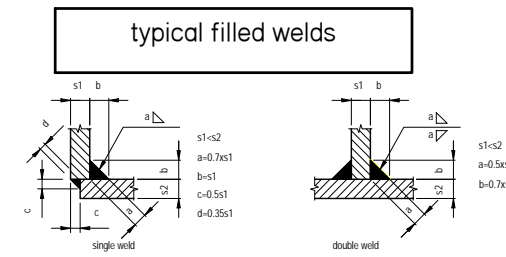


1:2



| DATE | No. | REVISION | BY |
|------|-----|----------|----|
| | | | |
| | | | |
| | | | |
| | | | |
| | | | |

Connections
Nuts and Bolts : 8.8 class galv. "DACROMET"
Welds : MAG or basic electrode as UNI 10011



Thickness of the welds have to be equal to the minimum thickness of the pieces to be join where is not indicated differently.

NORMATIVE DI RIFERIMENTO:

- UNI 4600 Indicazione delle rugosità sui disegni
- UNI7070 Acciai non legati per impieghi strutturali
- UNI EN 22553 Rappresentazione simbolica delle saldature sui disegni
- UNI EN 10025 Acciai non legati laminati a caldo

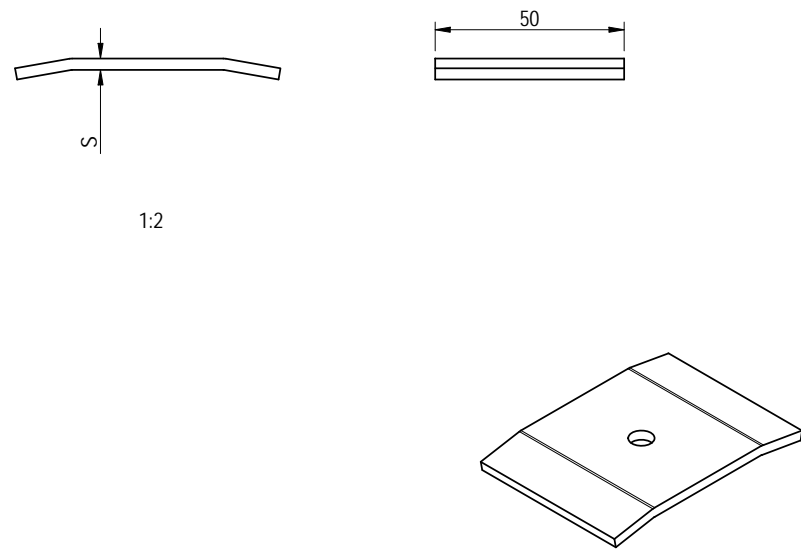
MECH srl
Via Pasteur, 16 - Reggio Emilia
Tel. 0522/332903 - FAX 0522/1710466
E-mail: info@strutture.info



Scale :
See views

| | |
|------------------------------------------------------|---------------------------------------------|
| Total: PROFILI STANDARD IMPIANTI FOTOVOLTAICI | Date: |
| Title: PROFILO OMEGA DI PARETE SERIE 40 | Proj. : Menozzi Ing. Stefano Desig.: SNA |
| Details n°: | Drawing n° OMEGA DI PAR. SER. 40 |
| File's name: | Revision n° 0 |

| Codice | Descrizione | Disegno | Materiale | H (mm) | S (mm) | H modulo (mm) | A (mm) | B (mm) | Passo max (mm) | Sbalzo max (mm) | Peso |
|--------|------------------------------------------|-------------------|-----------------|--------|--------|---------------|--------|--------|----------------|-----------------|-----------|
| | PRESSORE 50x70 xsp2 mat. AISI304 | PRESSORE SERIE 40 | AISI304 | 70 | 2 | - | | | | | 0.80 kg/m |
| | PRESSORE 50x70 xsp3 mat. AISI304 | | AISI304 | 70 | 3 | - | | | | | 1.20 kg/m |
| | PRESSORE 50x70 xsp2 mat. EN AW 5754 H111 | | EN AW 5754 H111 | 70 | 2 | - | | | | | 0.03 kg/m |
| | PRESSORE 50x70 xsp3 mat. EN AW 5754 H111 | | EN AW 5754 H111 | 70 | 3 | - | | | | | 0.05 kg/m |



| | | | |
|--|--|--|--|
| | | | |
| | | | |
| | | | |
| | | | |
| | | | |

| DATE | No. | REVISION | BY |
|------|-----|----------|----|
| | | | |

Connections
Nuts and Bolts : 8.8 class galv. "DACROMET"
Welds : MAG or basic electrode as UNI 10011

typical filled welds

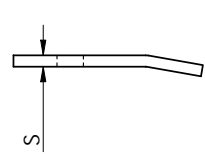
Thickness of the welds have to be equal to the minimum thickness of the pieces to be join where is not indicated differently.

NORMATIVE DI RIFERIMENTO:
UNI 4600 Indicazione delle rugosità sui disegni
UNI7070 Acciai non legati per impieghi strutturali
UNI EN 22553 Rappresentazione simbolica delle saldature sui disegni
UNI EN 10025 Acciai non legati laminati a caldo

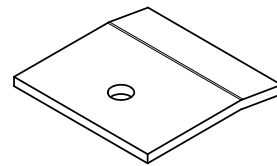
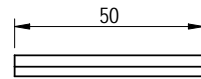
| | |
|------------------------------------------------------------------------------------------------------------------------------|--------------------------|
| MECH srl Via Pasteur, 16 - Reggio Emilia Tel. 0522/332903 - FAX 0522/1710466 E-mail: info@strutture.info | Scale : See views |
| | |

| | | |
|------------------------------------------------------|--|------------------------------|
| Total: PROFILI STANDARD IMPIANTI FOTOVOLTAICI | | Date: |
| Title: PRESSORE SERIE 40 | | Proj. : Menozzi Ing. Stefano |
| Details n°: | | Desig.: SNA |
| File's name: | | Drawing n° PRESSORE SERIE 40 |
| | | Revision n° 0 |

| Codice | Descrizione | Disegno | Materiale | H (mm) | S (mm) | H modulo (mm) | A (mm) | B (mm) | Passo max (mm) | Sbalzo max (mm) | Peso |
|--------|---------------------------------------------------|----------------------------|-----------------|--------|--------|---------------|--------|--------|----------------|-----------------|-----------|
| | PRESSORE LATERALE 50x50 xsp2 mat. AISI304 | PRESSORE LATERALE SERIE 40 | AISI304 | 50 | 2 | - | | | | | 0.80 kg/m |
| | PRESSORE LATERALE 50x50 xsp3 mat. AISI304 | | AISI304 | 50 | 3 | - | | | | | 1.20 kg/m |
| | PRESSORE LATERALE 50x50 xsp2 mat. EN AW 5754 H111 | | EN AW 5754 H111 | 50 | 2 | - | | | | | 0.03 kg/m |
| | PRESSORE LATERALE 50x50 xsp3 mat. EN AW 5754 H111 | | EN AW 5754 H111 | 50 | 3 | - | | | | | 0.05 kg/m |



1:2

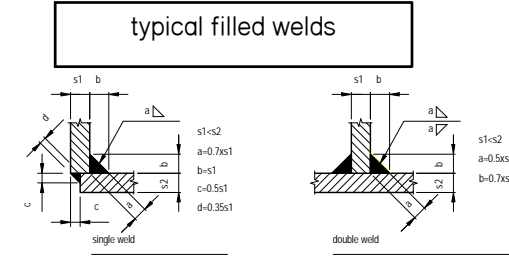


| | | | |
|--|--|--|--|
| | | | |
| | | | |
| | | | |
| | | | |
| | | | |
| | | | |

| DATE | No. | REVISION | BY |
|------|-----|----------|----|
| | | | |

Connections
 Nuts and Bolts : 8.8 class galv. "DACROMET"
 Welds : MAG or basic electrode as UNI 10011

NORMATIVE DI RIFERIMENTO:
 UNI 4600 Indicazione delle rugosità sui disegni
 UNI7070 Acciai non legati per impieghi strutturali
 UNI EN 22553 Rappresentazione simbolica delle saldature sui disegni
 UNI EN 10025 Acciai non legati laminati a caldo

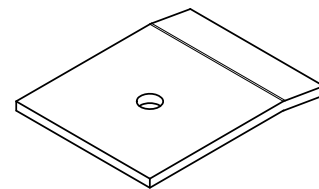
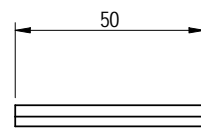
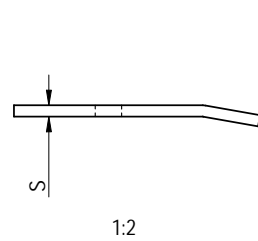


MECH srl
 Via Pasteur, 16 - Reggio Emilia
 Tel. 0522/332903 - FAX 0522/1710466
 E-mail: info@strutture.info

Scale :
 See views

| | |
|------------------------------------------------------|---------------------------------------------|
| Total: PROFILI STANDARD IMPIANTI FOTOVOLTAICI | Date: |
| Title: PRESSORE LATERALE SERIE 40 | Proj. : Menozzi Ing. Stefano Desig.: SNA |
| Details n°: | Drawing n° PRESSORE LAT. SER. 40 |
| File's name: | Revision n° 0 |

| Codice | Descrizione | Disegno | Materiale | H (mm) | S (mm) | H modulo (mm) | A (mm) | B (mm) | Passo max (mm) | Sbalzo max (mm) | Peso |
|--------|---------------------------------------------------|----------------------------|-----------------|--------|--------|---------------|--------|--------|----------------|-----------------|-----------|
| | PRESSORE LATERALE 50x65 xsp2 mat. AISI304 | PRESSORE LATERALE SERIE 50 | AISI304 | 65 | 2 | - | | | | | 1.29 kg/m |
| | PRESSORE LATERALE 50x65 xsp3 mat. AISI304 | | AISI304 | 65 | 3 | - | | | | | 1.87 kg/m |
| | PRESSORE LATERALE 50x65 xsp2 mat. EN AW 5754 H111 | | EN AW 5754 H111 | 65 | 2 | - | | | | | 0.42 kg/m |
| | PRESSORE LATERALE 50x65 xsp3 mat. EN AW 5754 H111 | | EN AW 5754 H111 | 65 | 3 | - | | | | | 0.63 kg/m |

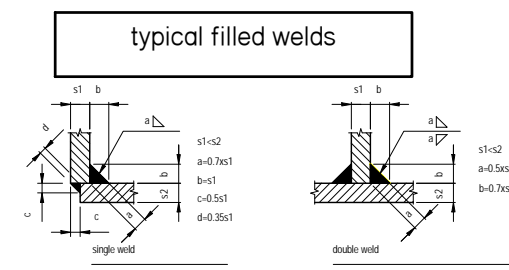


| | | | |
|--|--|--|--|
| | | | |
| | | | |
| | | | |
| | | | |
| | | | |

| DATE | No. | REVISION | BY |
|------|-----|----------|----|
| | | | |

Connections
Nuts and Bolts : 8.8 class galv. "DACROMET"
Welds : MAG or basic electrode as UNI 10011

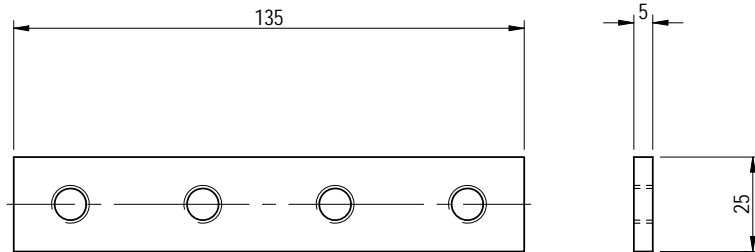
NORMATIVE DI RIFERIMENTO:
UNI 4600 Indicazione delle rugosità sui disegni
UNI7070 Acciai non legati per impieghi strutturali
UNI EN 22553 Rappresentazione simbolica delle saldature sui disegni
UNI EN 10025 Acciai non legati laminati a caldo



MECH srl
Via Pasteur, 16 - Reggio Emilia
Tel. 0522/332903 - FAX 0522/1710466
E-mail: info@strutture.info

Scale :
See views

| | |
|------------------------------------------------------|---------------------------------------------|
| Total: PROFILI STANDARD IMPIANTI FOTOVOLTAICI | Date: |
| Title: PRESSORE LATERALE SERIE 50 | Proj. : Menozzi Ing. Stefano Desig.: SNA |
| Details n°: | Drawing n° PRESSORE LAT. SER. 50 |
| File's name: | Revision n° 0 |



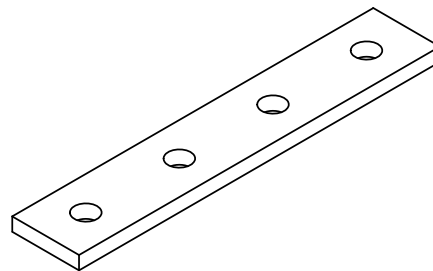
1:2

Piastra di giunzione omega serie 40

Codice:

Materiale: AISI 304

Peso: 0,13 kg





NORMATIVE DI RIFERIMENTO:

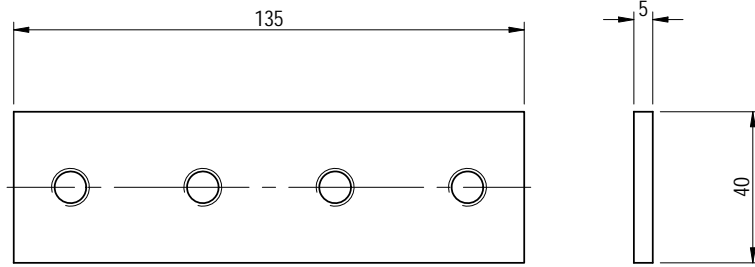
UNI 4600 Indicazione delle rugosità sui disegni

UNI7070 Acciai non legati per impieghi strutturali

UNI EN 22553 Rappresentazione simbolica delle saldature sui disegni

UNI EN 10025 Acciai non legati laminati a caldo

| | | | |
|--------------------------------------------------------------------------------------------------------------------------------------------------------------------------------------------------------------|------------|---------------------------------------------------------------------------------------------------------------|-----------|
| | | | |
| | | | |
| <i>DATE</i> | <i>No.</i> | <i>REVISION</i> | <i>BY</i> |
|  MECH srl Via Pasteur, 16 - Reggio Emilia Tel. 0522/332903 - FAX 0522/1710466 E-mail: info@strutture.info | |  Scale : See views | |
| Total: PROFILI STANDARD IMPIANTI FOTOVOLTAICI | | | Date: |
| Title: Giunzione omega serie 40 | | Proj. : Menozzi Ing. Stefano | |
| Details n°: | | Desig.: SNA | |
| File's name: | | Drawing n° = vedi Titob | |
| | | Revision n° 0 | |



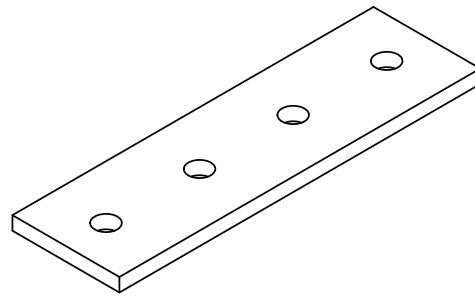
1:2

Piastra di giunzione omega serie 50

Codice:

Materiale: AISI 304

Peso: 0,21 kg





NORMATIVE DI RIFERIMENTO:

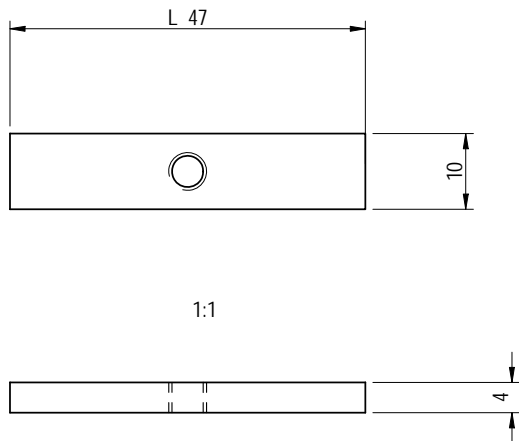
UNI 4600 Indicazione delle rugosità sui disegni

UNI7070 Acciai non legati per impieghi strutturali

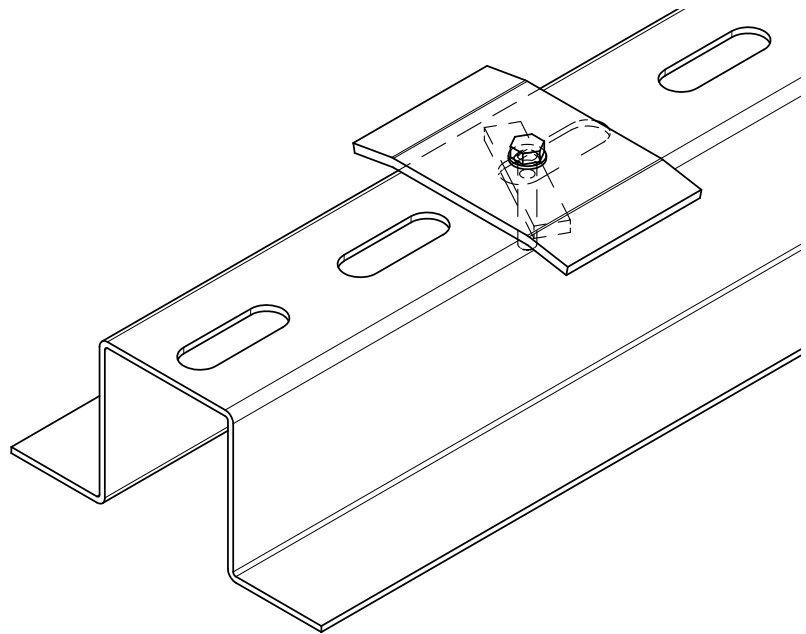
UNI EN 22553 Rappresentazione simbolica delle saldature sui disegni

UNI EN 10025 Acciai non legati laminati a caldo

| | | | |
|--------------------------------------------------------------------------------------------------------------------------------------------------------------------------------------------------------------|------------|----------------------------------------------------------------------------------------------------------------------|-----------|
| | | | |
| | | | |
| DATE | No. | REVISION | BY |
|  MECH srl Via Pasteur, 16 - Reggio Emilia Tel. 0522/332903 - FAX 0522/1710466 E-mail: info@strutture.info | |  Scale : See views | |
| Total: PROFILI STANDARD IMPIANTI FOTOVOLTAICI | | | Date: |
| Title: Giunzione omega serie 50 | | Proj. : Menozzi Ing. Stefano | |
| Details n°: | | Desig.: SNA | |
| File's name: | | Drawing n° = vedi Titob | |
| | | Revision n° 0 | |



Piastrina Nottolino
Materiale: AISI 304
Peso: 0,21 kg/m





NORMATIVE DI RIFERIMENTO:

UNI 4600 Indicazione delle rugosità sui disegni

UNI7070 Acciai non legati per impieghi strutturali

UNI EN 22553 Rappresentazione simbolica delle saldature sui disegni

UNI EN 10025 Acciai non legati laminati a caldo

| | | | |
|--------------------------------------------------------------------------------------------------------------------------------------------------------------------------------------------------------------|------------|----------------------------------------------------------------------------------------------------------------------|------------------------------|
| | | | |
| | | | |
| DATE | No. | REVISION | BY |
|  MECH srl Via Pasteur, 16 - Reggio Emilia Tel. 0522/332903 - FAX 0522/1710466 E-mail: info@strutture.info | |  Scale : See views | |
| Total: KIT STANDARD PER INTEGRAZIONE FOTOVOLTAICA | | | Date: |
| Title: NOTTOLINO COMPLETO M5 | | | Proj. : Menozzi Ing. Stefano |
| Details n°: | | | Desig.: SNA |
| File's name: | | | Drawing n° = vedi Titolo |
| | | | Revision n° 0 |